



PROTEX[®]

Product Catalog

TABLE OF CONTENTS

2 Overview

3-4 Screen Protection

PROTEX® SL

PROTEX® RSL, PROTEX® PSL, PROTEX® USL

PROTEX® L

PROTEX® RL, PROTEX® PL, PROTEX® RL *EXTREME*

5-6 Frame and Stringer Protection

PROTEX® P

PROTEX® ASP, PROTEX® PTP, PROTEX® CMP, PROTEX® PSP

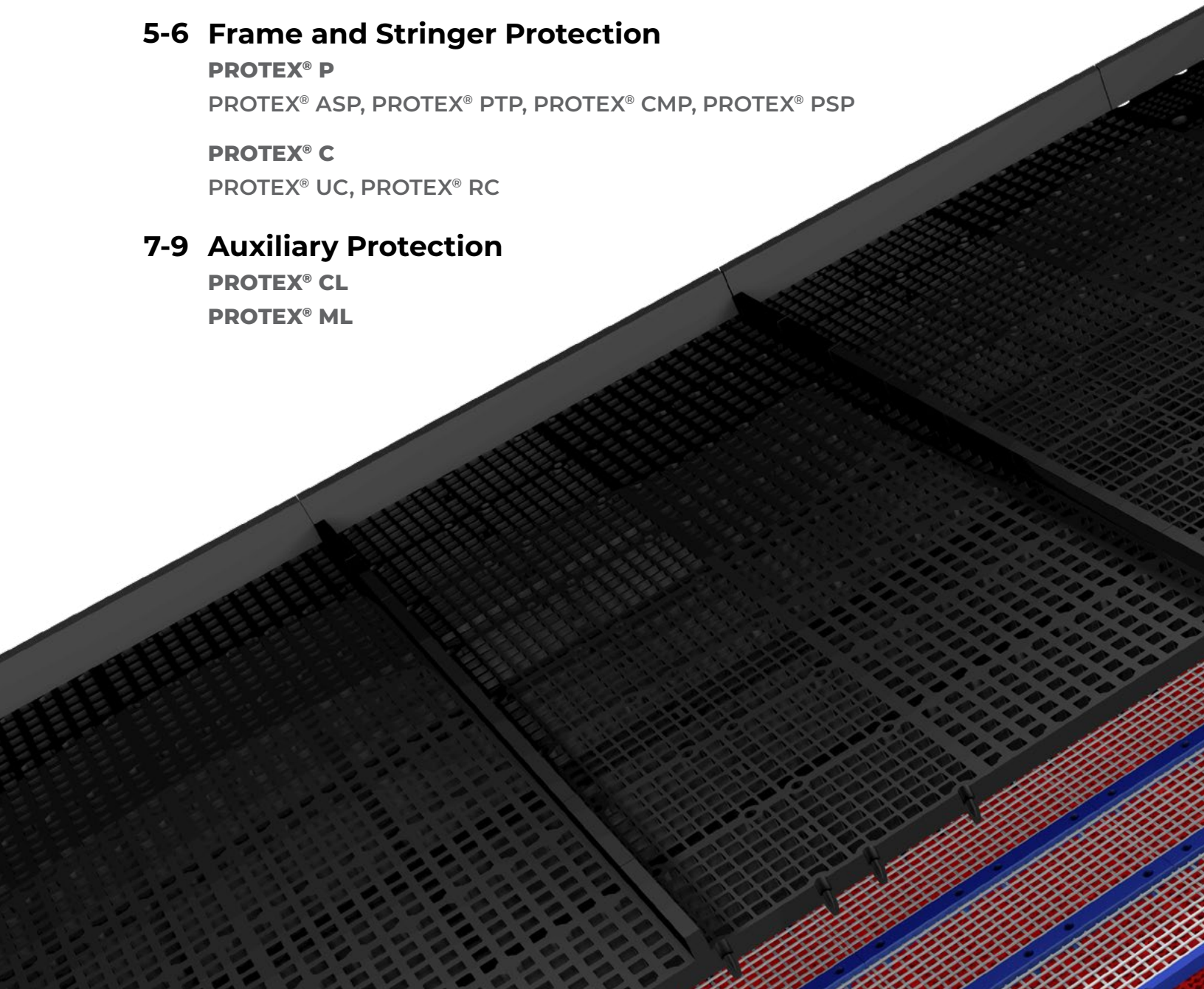
PROTEX® C

PROTEX® UC, PROTEX® RC

7-9 Auxiliary Protection

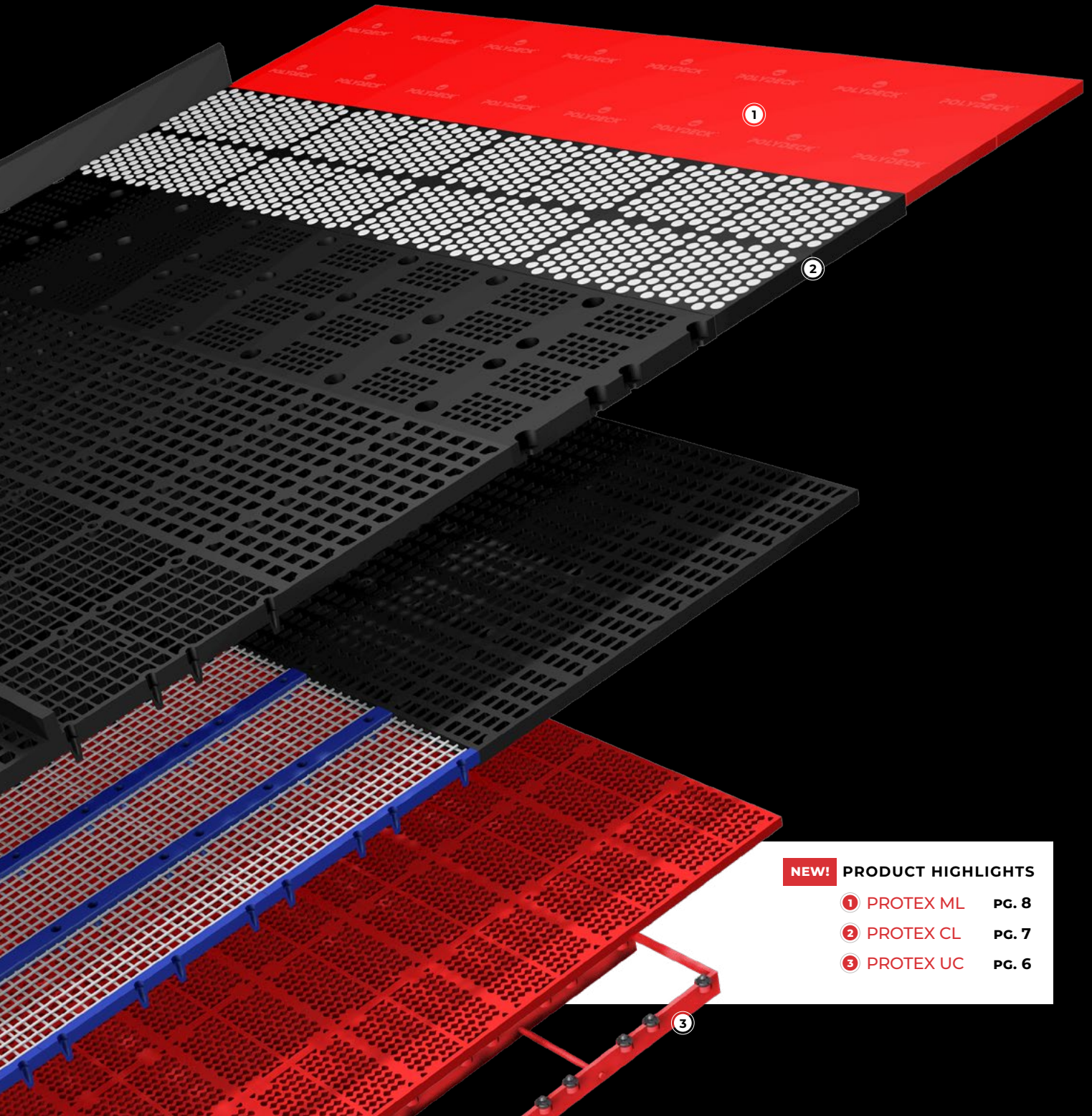
PROTEX® CL

PROTEX® ML



Polydeck has engineered thousands of screen media panels to meet your most challenging processing needs. Our customized solutions provide increased production efficiencies and wear life across all decks and all locations.

PROTEX is our newest line of protective products designed specifically to protect your investment and extend the life of your processing equipment.



NEW! PRODUCT HIGHLIGHTS

- 1** PROTEX ML PG. 8
- 2** PROTEX CL PG. 7
- 3** PROTEX UC PG. 6

SCREEN PROTECTION

PROTEX® SL Side Wear Plates

PROTEX SL protects the sides of your vibrating screen from excessive wear, while also holding screen panels on the outside edge of the deck securely in position.



PROTEX® RSL Rubber Side Wear Plate

Rubber Side Wear Plates are best suited for heavy-duty applications, large (>3") material, dry material, and wet/rounded material. They are commonly used in scalping and dry applications.

THICKNESS: 1- 1/8"
HEIGHT: 4-12"
Steel-backed plates



PROTEX® PSL Polyurethane Side Wear Plate

Polyurethane Side Wear Plates are best suited for moderate to heavy applications, wet applications(wash/rinse screens), and are long lasting/high wear life options.

SIZES:
3/4" thick X 5" high
1-1/4" thick X 8" high
Steel-reinforced



PROTEX® USL UHMW Side Wear Plate

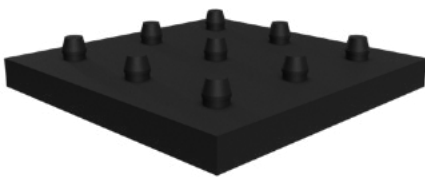
UHMW Side Wear Plates are best suited for highly customized side sheets and low to moderate wear applications. A great lower cost option for moderate protection. If high wear option is needed on customized side sheet, pair a UHMW spacer with Polyurethane Side Wear Plates or Rubber Side Wear Plates in a 2-piece system.

MADE TO ORDER

SCREEN PROTECTION

PROTEX® L Liners

Polydeck liners are the easiest, quickest, and safest way to help protect feed chutes, feed boxes, discharge lips, transfer points, or any similar location that needs to be protected without welding or cutting. Our liners prevent premature replacement of your equipment and save you money in the long run. Choose from a variety of liners for your specific needs or have one of our experts recommend the best liner option for you.

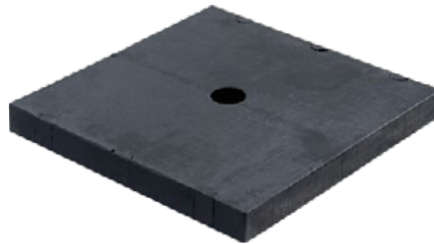


PROTEX® PL Polyurethane Liners

PROTEX PL are designed to protect equipment in wet applications. These liners are commonly found in wash plants and dredging applications by lining feed boxes, chutes, and discharge lips, but their versatility make them an asset in any application processing wet material.

THICKNESS: 20mm, 30mm, 40mm, 50mm, 65mm

LENGTH: can be cut to size
Knock-in nipple fastening
Can be cut to custom sizes and shapes



PROTEX® RL Rubber Liners

PROTEX RL are designed to withstand high impact, heavy-duty dry applications such as feed boxes, discharge lips, and transfer points. They serve as long lasting wear liners in many slurry-fed applications.

THICKNESS: 25mm-50mm

SIZE: 1'X1' or 1'X2'

Bolt-On Fastening
Steel Backed Plates
Beveled or Custom Cuts

PART	SIZE
SDRDXL11A	1' x 1' - 25mm thick; Standard duty
HDRDXL11A	1' x 1' - 50mm thick; Heavy duty
SDRDXL12A	1' x 2' - 25mm thick; Standard duty
HDRDXL12A	1' x 2' - 50mm thick; Heavy duty
BDRPLUG	Bolt hole plug



PROTEX® RL *EXTREME* Heavy-Duty Rubber Liners

A great solution when extra-heavy loads, large top sizes, and high volumes are involved. Made with heavy-duty rubber and a steel-plate backing, they can be cut to nearly any shape and beveled to ensure total coverage of the target area.

THICKNESS: 25mm-100mm

SIZE: Up to 4'X8'

FRAME & STRINGER PROTECTION

PROTEX® P Protectors



PROTEX® ASP Angle Stringer Protectors

Made of polyurethane to lay on top of angle iron to provide additional wear protection. Most commonly used on banana screens in coal and mining applications.

PART	SIZE
051014001	5mm thick x 12" long (2 wings)
051014003	5mm thick x 12" long (1 wing) can be used as a side ledge angle protector.
051014004	Side ledge angle protector with ¼" shim attached for 10mm over-width sides.



PROTEX® CMP Cross Member Protectors

Made from an impact-resistant rubber compound that is field-replaceable and can be bolted into place or removed in minutes.

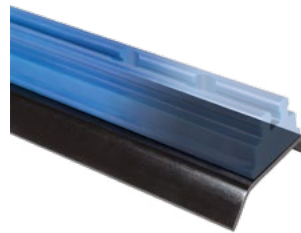
SIZES	CROSS MEMBERS	FOR STRINGERS
4", 6", 8", 10", 12"	Square or Rectangular	3" welded flush



PROTEX® PTP Protops

Molded 1-foot sections of hard polyurethane that slide over Polydeck's PipeTop stringers and interlock to form a continuous layer of protection.

PART	SIZE	PART	SIZE
F6000588	2/ft. x 2-3/4" tall	F6000592	2/ft. x 1" tall
F6000589	3/ft. x 2-3/4" tall	F6000593	3/ft. x 1" tall



PROTEX® PSP PolyRail Stringer Protectors

Made of polyurethane-for use with PolyRail on stringers up to 3" wide providing additional wear protection. Most commonly used on banana screens in coal and mining.

PART	SIZE
PROAN48	3" x 48" - Holes custom drilled
PROAP48	3" x 48" - Holes at 2", 8", 4", 8", 4", 8", 4", 8", and 2"
PROAD48	3" x 48" - Holes at 3", 14", 14", 14", and 3" or 6", 12", 12", 12", and 6"
PROAL48	3" x 48" - Holes at 4½", 12½", 14", 12½", and 4½"

FRAME & STRINGER PROTECTION

PROTEX® C Coatings



**NEW! PROTEX® UC
Seamless Coating**

PROTEX® UC Seamless Coating

PROTEX UC is an evenly applied, seamless coating that affords advanced abrasion protection in wet and/or dry applications as well as corrosion resistance in wet applications. Designed as a seamless coat of protection, PROTEX UC is customizable and can be applied to your steel and a wide range of objects including precision area requirements. In corrosive environments, it protects against corrosion by sealing the underlying steel from the slurry.

THICKNESS: 1/8"; other custom sizes based on availability

PROTEX® RC Rubber Lining

PROTEX RC is a natural rubber compound designed to be highly effective against both abrasive and impact wear. PROTEX RC is available in multiple thicknesses and can be easily customized to fit a variety of objects and areas in your plant including vibrating screen frames, chute work, discharge and material transfer points, trommels, or other areas where added protection against abrasion may be needed.

THICKNESS: 1/4", 3/8"; other custom sizes based on availability

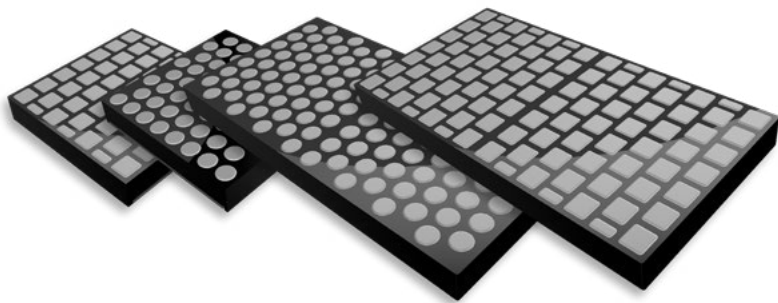
AUXILIARY PROTECTION

PROTEX® CL **NEW** Ceramic Liners

Engineered for maximum performance in aggressive wear environments, PROTEX CL is a versatile bolt-in solution for highly abrasive applications. Using proprietary molding techniques and a variety of ceramic shape options, Polydeck's ceramic liners can be designed to fit your specific application.

Choose from two different ceramic shapes to maximize wear capabilities in specific applications. PROTEX CL are available in 1x1 and 1x2 configurations with cylindrical and square ceramic options.

- CERAMIC SHAPES:** square, cylinder, solid
- SIZES:** square (1'x1', 1'x2'), cylinder (1'x1', 1'x2'), solid (1'x1')
- FASTENING OPTIONS:** stud weld, inserted nuts (male or female)



Impact	Square	Cylinder
High	○	✓
Medium	✓	✓
Low	✓	✓

○ = Consult Applications ✓ = Recommended

AUXILIARY PROTECTION

PROTEX® ML NEW Magnetic Liners

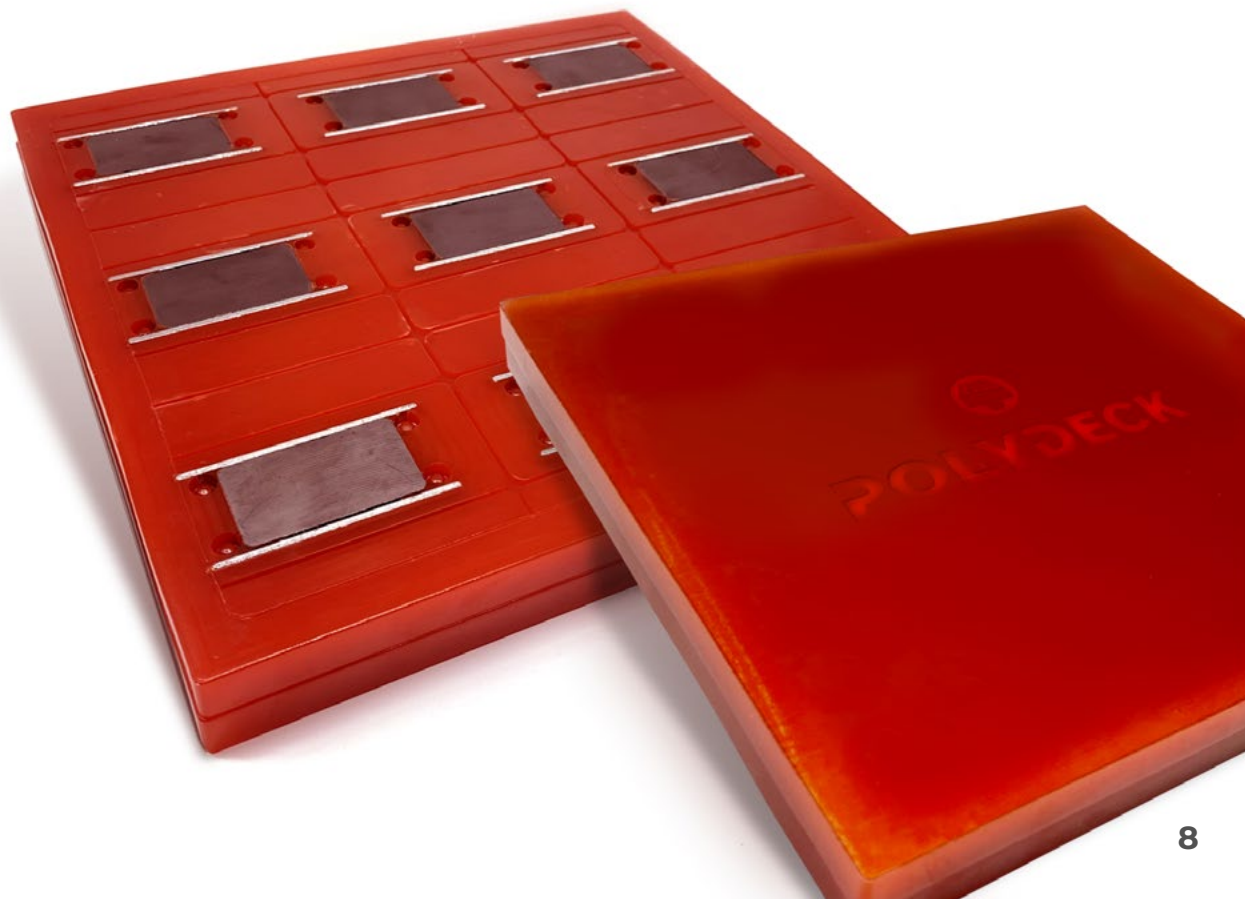
PROTEX ML are engineered with the highest quality ceramic magnets to ensure a secure attachment in extreme conditions.

Designed with extreme holding force, our industrial strength ceramic magnets are molded into the panel and uniquely positioned. Molded inch increment lines allow for easy field modifications.

Best used on flat, metal surfaces where permanent mechanical fastening is not feasible.

SIZE: 1'X1'

MATERIAL: Polyurethane
9 magnets



AUXILIARY PROTECTION

PROTEX® CBL Canoe Liners

Engineered for heavy-duty screening and crushing operations, Polydeck conveyor liners are an adaptable solution for load control and wear protection along conveyor belt sides. Designed to fit the loading profile height of your operation, produce maximum wear life, and reduce dust and spillage.

THICKNESS: 1", 1.5" and 2"

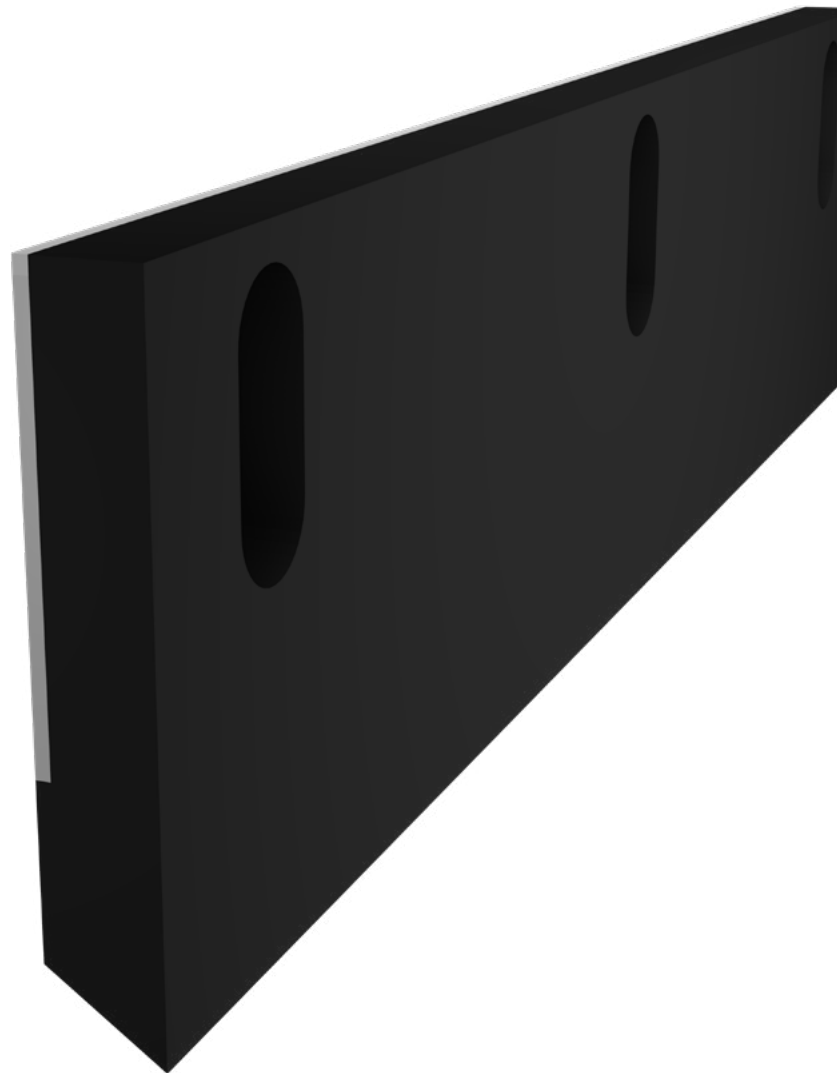
HEIGHT: 8", 9", 10" and 12"

Steel backed plates

Counterbored mounting slots allowing 2" of adjustment for $\frac{5}{8}$ " or $\frac{3}{4}$ " hardware.

Custom location for mounting slots can be accommodated.

Double bevels available to allow for flipping.





**IS YOUR EQUIPMENT
TAKING A BEATING?**

Talk with a screening
application expert today.



polydeck.com

Corporate Headquarters
1790 Dewberry Road
Spartanburg, SC 29307
Call: +1-864-579-4594

polydeck.com

