



POLYDECK®

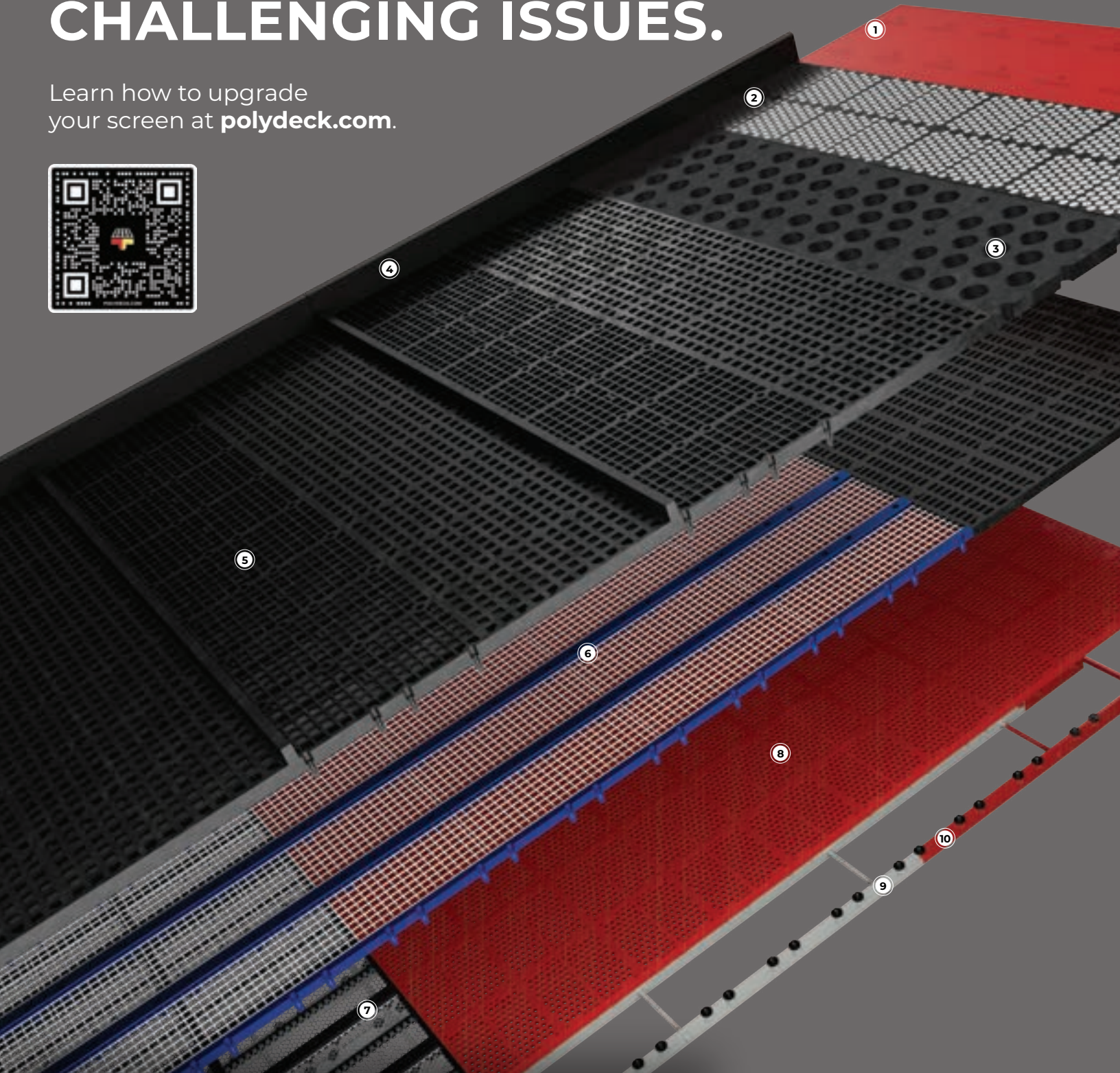
WE GOT THIS

PRODUCT CATALOG
VOLUME 18

polydeck.com

SCREEN MEDIA ENGINEERED TO SOLVE YOUR MOST CHALLENGING ISSUES.

Learn how to upgrade
your screen at polydeck.com.



- BUILDOUT SHOWN**
- ① Magnetic Liners
 - ② Ceramic Liners
 - ③ ARMADEX®
 - ④ PROTEX® SL Liners
 - ⑤ RUBBERDEX® DMAX
 - ⑥ METALDEX® XPT
 - ⑦ METALDEX ULTRACLEAN
 - ⑧ POLYDEX® MAXI
 - ⑨ PIPETOP™ Conversion
 - ⑩ PROTEX® UC Coating

Pushing the boundaries
of wear life, open area,
and drain rates.

TABLE OF CONTENTS

Why Polydeck?	04
Panel Design	10
New Products	15
Screen Media	16
Support Systems	24
Protective Items	30
Accessories	32
Services	36
Reference Guide	39



THE POLYDECK WAY
HONORING GOD IN ALL WE DO

WHY
SERVE. GROW. CARE.

WHAT
DELIVER EXTRAORDINARY PRODUCTS,
SOLUTIONS, & EXPERIENCES.

HOW
INTEGRITY • EXCELLENCE • HUMILITY • CARING

PERFORMANCE GUARANTEE

Wear Life Guarantee*

If your Polydeck-approved panels do not result in increased wear life from your previous screen media, we will replace your panels.

Labor Savings Guarantee*

If your Polydeck-approved panels do not reduce labor costs from your previous screen media, we will refund your purchase (on a pro-rated basis).

Product Specification Guarantee*

If Polydeck does not meet the required product specification after the initial installation, we will replace your panels at no cost to meet the requirements.

**In order to honor our performance guarantee, all relevant customer and product specification requirements and accurate application details must be received and reviewed in a timely fashion, prior to purchase.*



CUSTOM SOLUTIONS

Polydeck's in-house ability to create custom solutions makes us the ideal partner when you are faced with particularly complex or unique screening challenges.

Our Screening Experts and Product Engineers partner with our customers to provide the best solutions using our technical expertise and experience.

ENGINEERING, INNOVATION, AND R&D

At Polydeck, our modular screen media stand apart thanks to our relentless pursuit of precision engineering, innovative technology, and robust research and development. Each product is crafted for supreme durability and exceptional performance.

How do our engineering practices boost panel performance?

At Polydeck, we blend decades of engineering expertise with custom material formulations to ensure our panels offer exceptional longevity and maximum efficiency. Our innovations in aperture design, panel construction, and material formulations enable our products to consistently deliver superior performance, setting new industry standards.



How do we engineer our panels for strength?

The cornerstone of our panels' robustness lies in our unique insert designs. Each insert is meticulously engineered to meet rigorous application demands, handling various rock densities, sizes, drop heights, bed depths, and processing rates. Our proprietary inserts play a pivotal role in preventing material ingress and maintaining the integrity of deck surfaces.

How do we ensure our panels help you meet specifications?

Precision is key in our panel design. Aperture shapes and sizes, relief angles, and material formulations are finely tuned for each application to optimize material stratification and movement, ensuring precise and dependable screening results.



How do we prevent common issues like plugging and blinding?

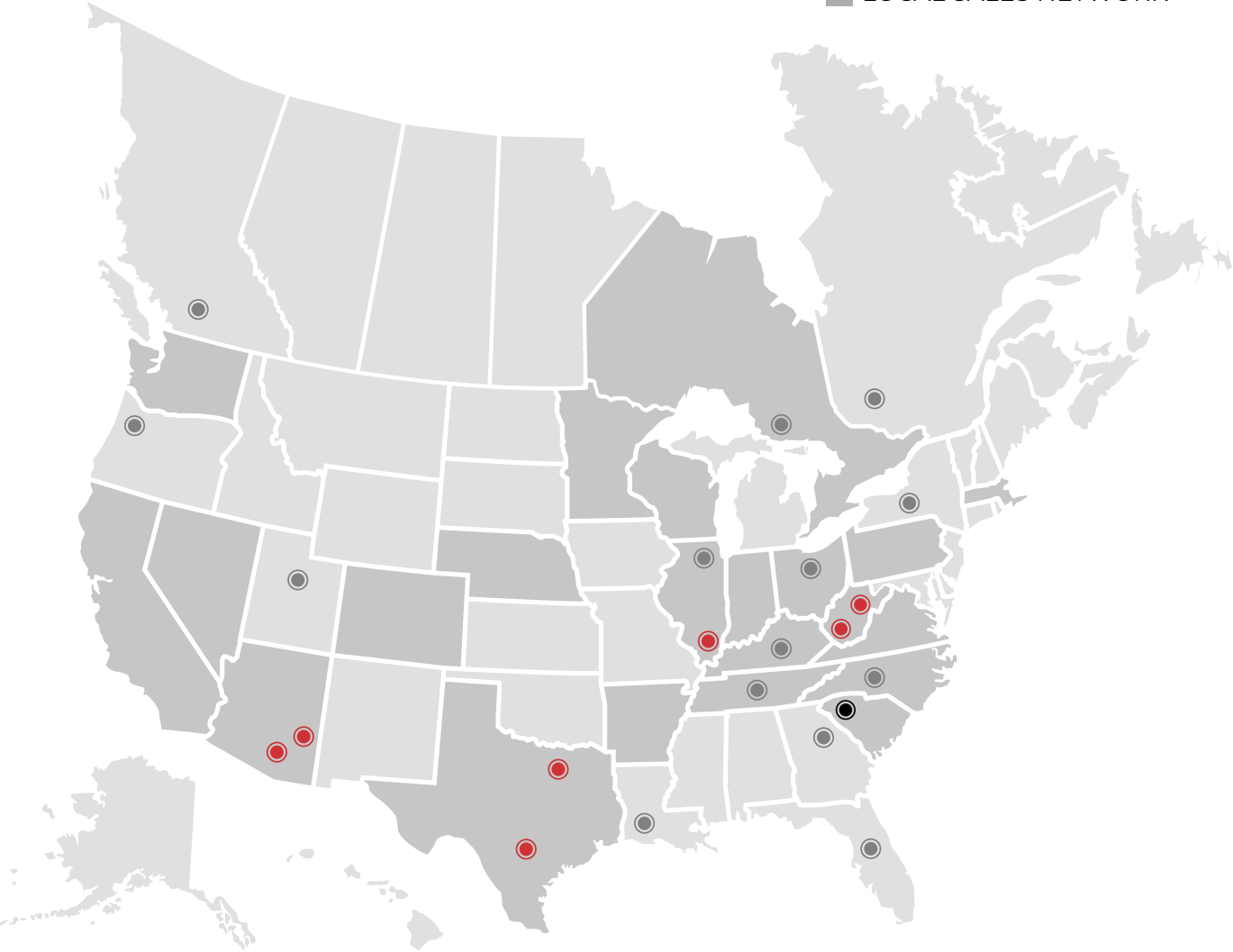
We employ a strategic mix of aperture design and material formulations to create self-cleaning panels. The generated secondary motion helps break material adhesions on panel surfaces and releases entrapped material from the apertures.



LEAD TIMES

Polydeck’s nationwide distribution network ensures lower on-site inventories, faster lead times, and closer collaboration for our customers. Our stocked inventories allow us to promptly address your specific needs, while our industry-leading lead times and on-time delivery guarantee ensure our products are available the moment you need them.

- DISTRIBUTION CENTERS
- HQ & MANUFACTURING PLANT
- DEALER PARTNERS
- LOCAL SALES NETWORK



Polydeck North America

HEADQUARTERS 1790 Dewberry Rd., Spartanburg, SC 29307 • 864-579-4594

ARIZONA DC

8620 E. Old Vail Rd, Suite 120
Tucson, AZ 85747
864-398-6795

ARIZONA EAST DC NEW!

4563 W. Safford Bryce Rd
Safford, AZ 85546
864-742-3360

ILLINOIS DC

607 W Main St
Ridgeway, IL 62979
864-735-5103

N. TEXAS DC

1612 Baker Rd
Sherman, TX 75090
864-347-0085

S. TEXAS DC

12050 Crownpoint, Suite 115
San Antonio, TX 78233
864-491-1813

N. WEST VIRGINIA/ MORGANTOWN DC

1063 Greenbag Rd., Suite B
Morgantown, WV 26508
864-680-1421

S. WEST VIRGINIA/ CHAPMANVILLE DC

46 Shae Ave.
Chapmanville, WV 25508
304-767-4974



Polydeck Latin America

POLYDECK CHILE

Camino La Vara 03400
8060123 San Bernardo
Santiago, Chile
Región Metropolitana
+56 2 23801319

POLYDECK BRAZIL

+55 31 99503-3997

POLYDECK PERU

Calle Jacinto Ibañez 315
Urb. Parque Industrial Megacentro
Almacén D112A, D112B
Arequipa, Peru
+51 9 4596 6996



MATERIAL FORMULATIONS

Innovation in material science is one of the many reasons why Polydeck panels continue to push the boundaries of wear life and open area. Our advanced material formulations ensure durability and functionality to meet your specific application needs. Whether it’s withstanding harsh conditions, extending wear life, or minimizing common issues like blinding and buildup, our panels are specially formulated to boost efficiency and reduce cost over time.

POLYURETHANE

- XP**
Balanced formulation. Durable and abrasion resistant. Best used for general wet and dry screening applications.
- WXP**
Anti-microbial formulation. Fights microbial degradation and hydrolytic breakdown in panels.
- XP100**
Wear resistant formulation. Designed to endure abrasive wet applications or wet applications with high tonnage rates.
- WXP100**
Extreme anti-microbial formulation. For applications when microbial degradation persists even when using WXP panels.
- FXP**
Elastic formulation. Flexes under impact and self-cleans via secondary motion. Detaches blinding and clears buildup in wet and dry applications.

APPLICATION	SELF-CLEANING	WEAR LIFE	IMPACT
Wet Material	FXP	XP, XP100	–
Dry Material	FXP	–	–
Specialized	WXP	XP, WXP100	–

RUBBER

- XR**
Balanced formulation. Durable and abrasion resistant. Best used for general dry screening applications.
- FXR**
Extreme elasticity formulation. Self-cleans via aggressive secondary motion. Ideal for applications subject to severe blinding.
- XR100**
High durability formulation. Protects from cuts and gouges. Ideal for angular material and high drop heights.
- FXR100**
Balanced elasticity formulation. Flexible and durable. Designed to fight blinding under heavier loads.
- XR200**
Extreme durability formulation. Provides the longest wear life. For highly abrasive wet and dry applications, including scalping applications, mill discharge screens and trommels.
- HXR**
Self-extinguishing formulation. Ideal for operating temperatures of up to 230° F (110° C). Use in applications where risk of fire is present.

APPLICATION	SELF-CLEANING	WEAR LIFE	IMPACT
Wet Material	FXR	XR200	XR100
Dry Material	FXR, FXR100	XR, XR100, XR200, FXR100	XR100
Specialized	–	HXR	–

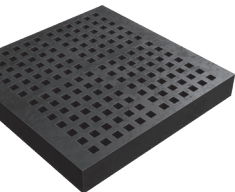


APERTURE DESIGN

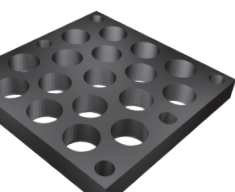
Driven by the unique challenges our customers have faced, our aperture designs have become increasingly sophisticated over the years. With 12 options to choose from, each aperture shape is engineered to address specific application challenges and produce materials that meet precise specification requirements.



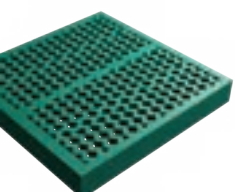
SOLID
For protection of severe impact and high wear zones. Suitable for integrated discharge lips or high wear hot spots.



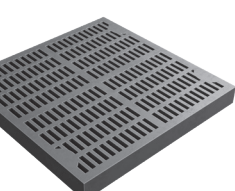
SQUARE
Ideal for precise particle sizing. Prevents flat and elongated material from passing.



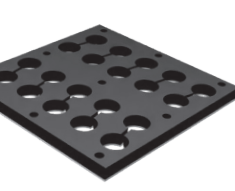
ROUND
Allows broader bridges and margins, enhancing durability and wear life. Ideal for primary scalping and heavy-duty applications.



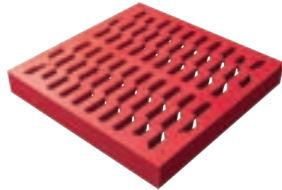
VR
Allows bridges to flex and release plugged material. Ideal for applications where there are a lot of near sized particles.



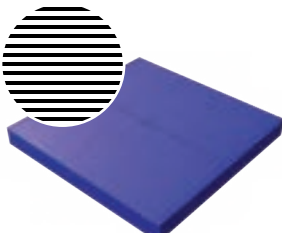
SLOTTED
Enhances drain rates when parallel to flow. Reduces plugging and passage of oversized material when perpendicular to flow.



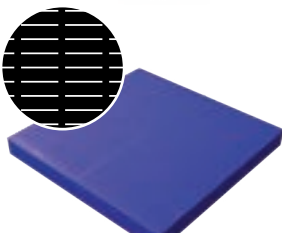
8VR
Figure 8 shaped slots that generate secondary movement. Reduces plugging in primary scalping applications while maintaining high wear life.



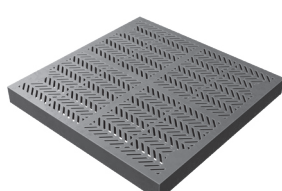
SVR – SLOTTED-VR
Prevents plugging when handling elongated materials. Withstands larger material loads and accelerated wear.



CONTINUOUS SLOT
Long-lasting alternative to profile wire. Rapid drainage of large volumes of water. Ideal for slimes removal in coal processing, as well as drain and rinse in wet applications.



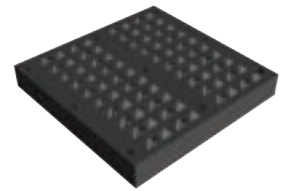
CUTTER
Long, continuous slots installed across flow for moisture reduction and magnetite recovery. Ideal for static flume applications.



HERRINGBONE
Angled slots designed to reduce plugging and passage of oversized material while enhancing drain rate and productivity.



VST – VECTOR SLOT TECHNOLOGY
Angled continuous slots designed to enhance drain rates while minimizing plugging and blinding. Ideal for heavy media recovery and dewatering applications.



HVR
Generates secondary movement for self-cleaning. Ideal for preventing near-size particle plugging in large-sizing or high impact applications.

SURFACE FEATURES

Surface features are structural additions to screen media used to produce a variety of effects. These can be bolted on or injection molded directly onto the panel. *Some restrictions apply.*

DAMS
Partitions used to slow material flow, build bed depth, or aid in material stratification. Comes in 1”, 2”, and 3” height options. Larger dams available upon request.

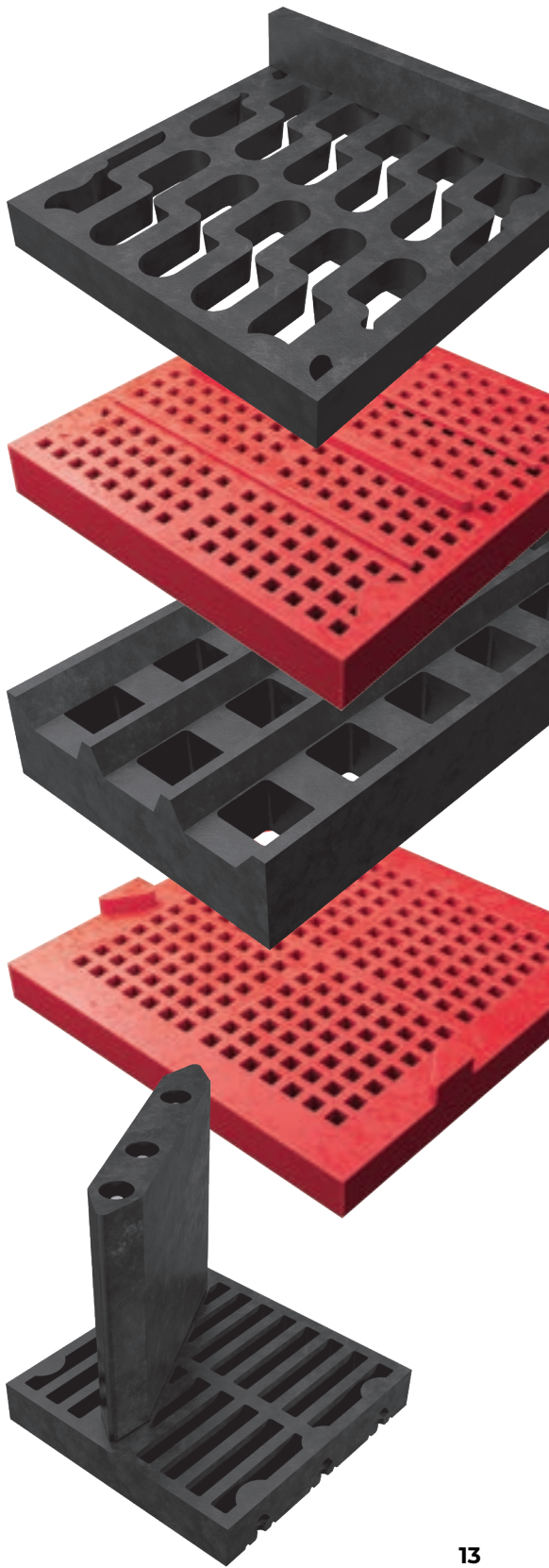
RESTRICTED FLOW BARS
A series of low-profile bars oriented across flow of material. Controls material flow and improves stratification in wet and dry fine sizing applications.

SKID BARS
Series of long, thin bars oriented with flow of material. Improves screening efficiency by preventing large material from blocking apertures. Adds additional support and wear life to media.

DEFLECTORS
Small protrusions added to panel margins to redirect material flow over apertures. Improves efficiency.

DIVERTERS
Angled dams for redirecting high volumes of material. Commonly used on discharge end to direct material into chutes.

SCROLLS
For screen media in trommels. Slows down and orients flow of material. Available in heights up to 10.5”.



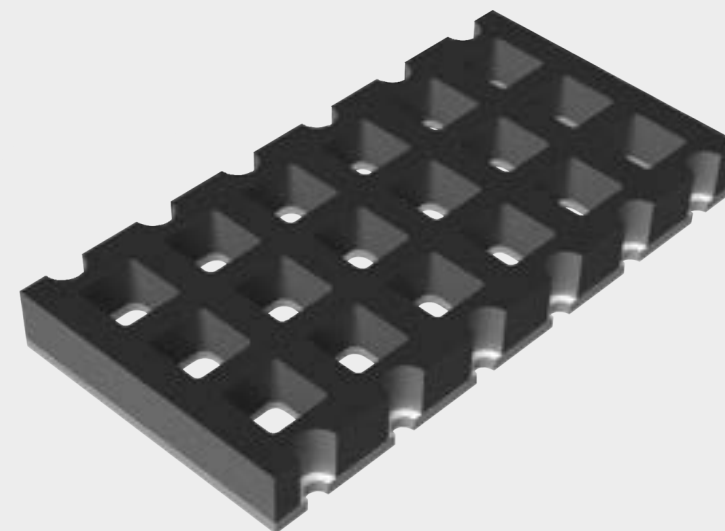
Sustainability. We Got This.

Committed to creating a positive,
lasting impact by the way
we care for our environment,
finances, customers, employees,
and community.

JOIN US ON OUR SUSTAINABILITY JOURNEY



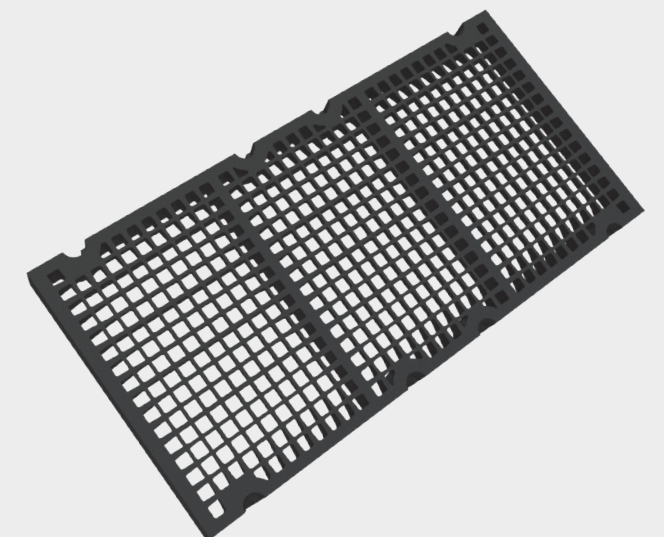
New Products



EXTENDED WEAR LIFE

RUBBERDEX® XTREME

Polydeck's latest addition to our RUBBERDEX line of media. Designed with a 3/8" steel plate backing instead of a traditional insert, RUBBERDEX XTREME provides significantly extended service life compared to traditional modular media. Designed for low open area applications, this product is ideal for combatting panel margin separation and excels under heavy impact conditions where a mixture of large rocks and fines are processed.



ULTRA HIGH OPEN AREA

RUBBERDEX® ULTRAMAX

Polydeck's ultra high open area rubber panels are designed to meet or surpass the open area of wire. Through advanced material science technologies, RUBBERDEX ULTRAMAX sets new standards in open area, safety, and ease of installation.

Patent Pending

POLYDEX®



Our line of injection molded modular polyurethane media is our most versatile line of modular screen media. With a variety of material formulations, the highest number of aperture design options, and the ability to integrate performance enhancing features like dams and skid bars, POLYDEX is effective in a wide range of general applications.

PANEL SIZE	PANEL THICKNESS	MATERIAL OPTIONS
1'x 1'	30mm - 65mm	See Material Formulations on page 10 & 11

APERTURE SIZE RANGES

APERTURE	SIZE RANGE
VR	0.08" – 3.54" 2mm – 90mm
Slotted	0.004" x 0.35" – 5.91" x 6.89" 0.1mm x 9mm – 150mm x 175mm
Square	0.08" x 7.87" 2mm – 200mm
SVR	0.03" x 0.28" – 1.5" x 2.17" 0.65mm x 7mm – 38mm x 55mm
Continuous Slot	0.03" – 0.08" 0.65mm – 2mm
Herringbone	0.04" – 0.12" 1mm – 3mm
Round	2.36" – 2.56" 60mm – 65mm
Solid	✓
Cutter	0.04" 1mm
VST	0.03" – 0.04" 0.65mm – 1mm

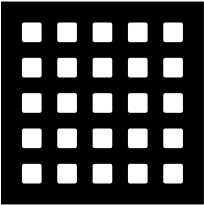
FASTENING OPTIONS

PolySnap®
Pin
PolyRail™ (2' x 1' only)

SURFACE FEATURE OPTIONS

Dams
Restricted Flow Bars
Skid Bars
Deflectors
Scrolls *(Bolted onto panel)*

PANEL STYLES



Standard

Open Area: Up to ≈ 23%
Priority: Wear Life

Aperture Options



VR



Slotted



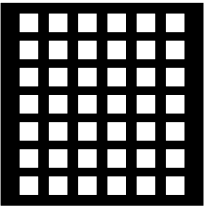
Square



Round



Solid



EOP

Open Area: Up to ≈ 28.2%
Priority: Wear Life

Aperture Options



VR



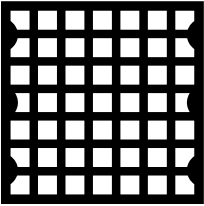
Slotted



Square



Solid



MAXI

Open Area: Up to ≈ 33%
Priority: Balanced Wear Life & Open Area

Aperture Options



SVR



Slotted



Continuous
Slot



Square



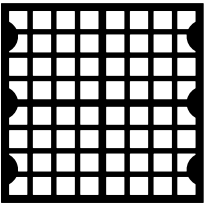
Herringbone



Cutter



VST



DMAX

Open Area: Up to ≈ 52%
Priority: Open Area

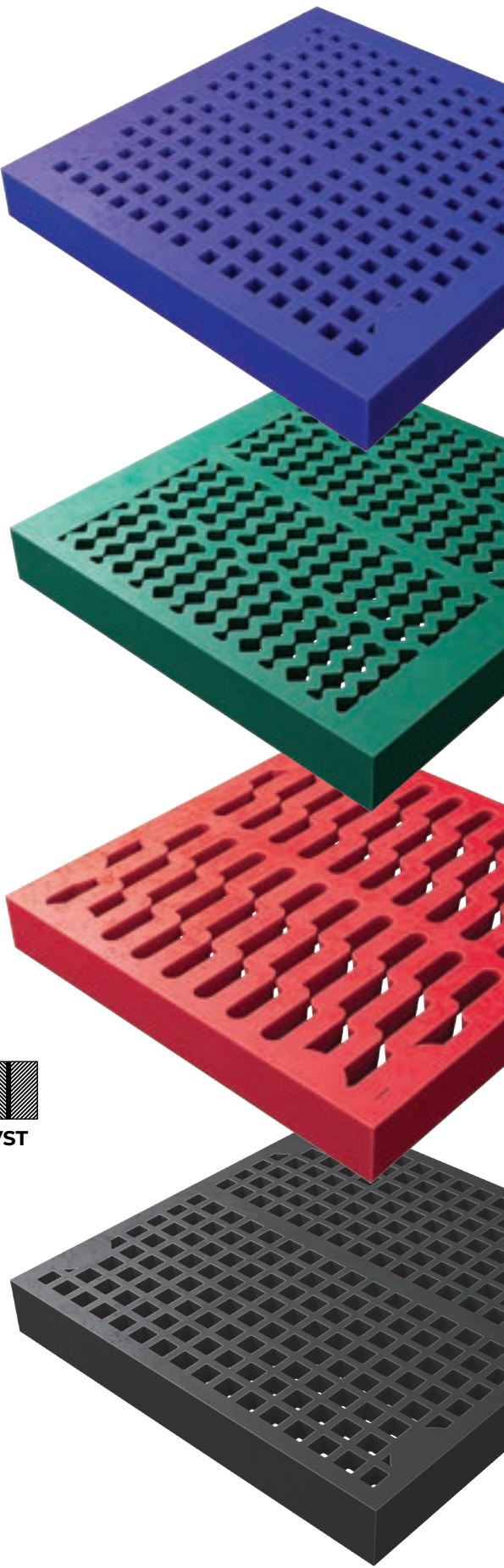
Aperture Options



Slotted



Square



RUBBERDEX®



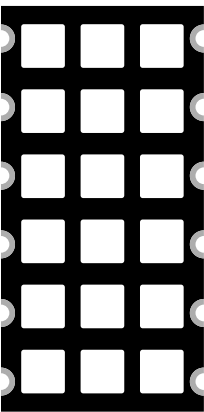
Our line of injection molded modular rubber media is designed with resilience and durability in mind. Available in multiple rubber formulations, RUBBERDEX is perfect for applications where gouging and abrasion are prevalent.

PANEL SIZE
1'x 2'

PANEL THICKNESS
30mm - 100mm

MATERIAL OPTIONS
See Material Formulations on page 10 & 11.

RUBBERDEX XTREME NEW!



Priority: Extended Wear Life
Aperture Size Range: 1.3" and higher
(35mm and higher)

Aperture Options

Square

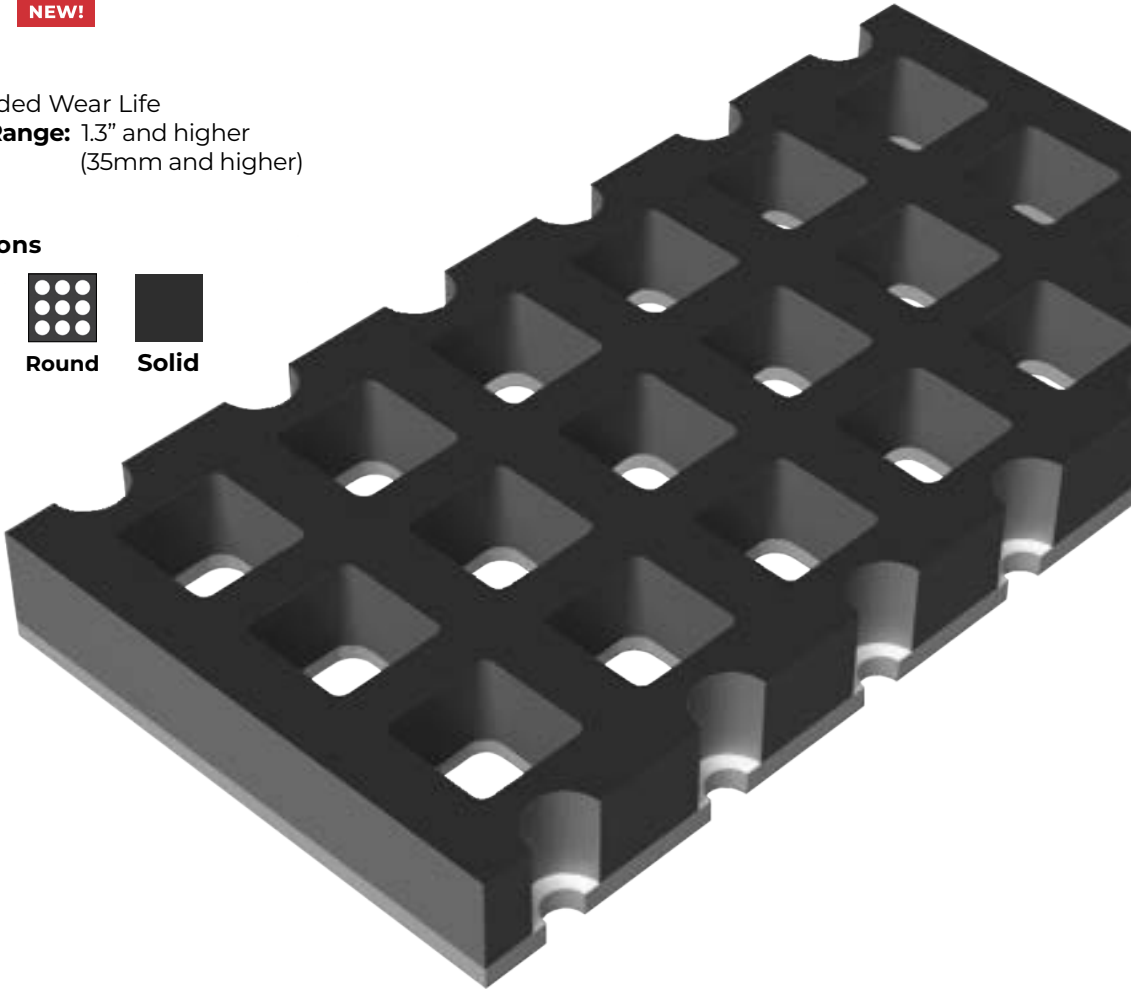
Slotted

Round

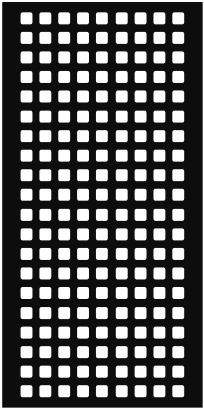
Solid

FASTENING OPTIONS

- Bolt-Down
- Pin & Sleeve



PANEL STYLES



STANDARD & EOP

Standard
Open Area: Up to \approx 46.4%
Priority: Wear Life

EOP
Open Area: Up to \approx 47.1%
Priority: Wear Life

Aperture Options

VR

Slotted

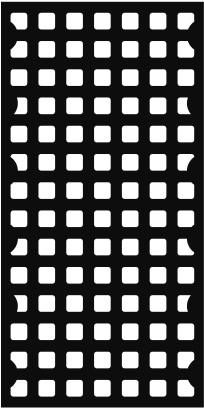
Square

SVR

Round

Solid

NEW! HVR



MAXI

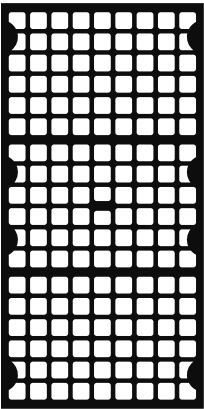
Open Area: Up to \approx 52.4%
Priority: Balanced Wear Life & Open Area

Aperture Options

Slotted

Square

NEW! HVR



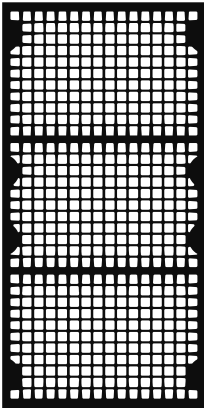
DMAX

Open Area: Up to \approx 56.2%
Priority: Open Area

Aperture Options

Slotted

Square



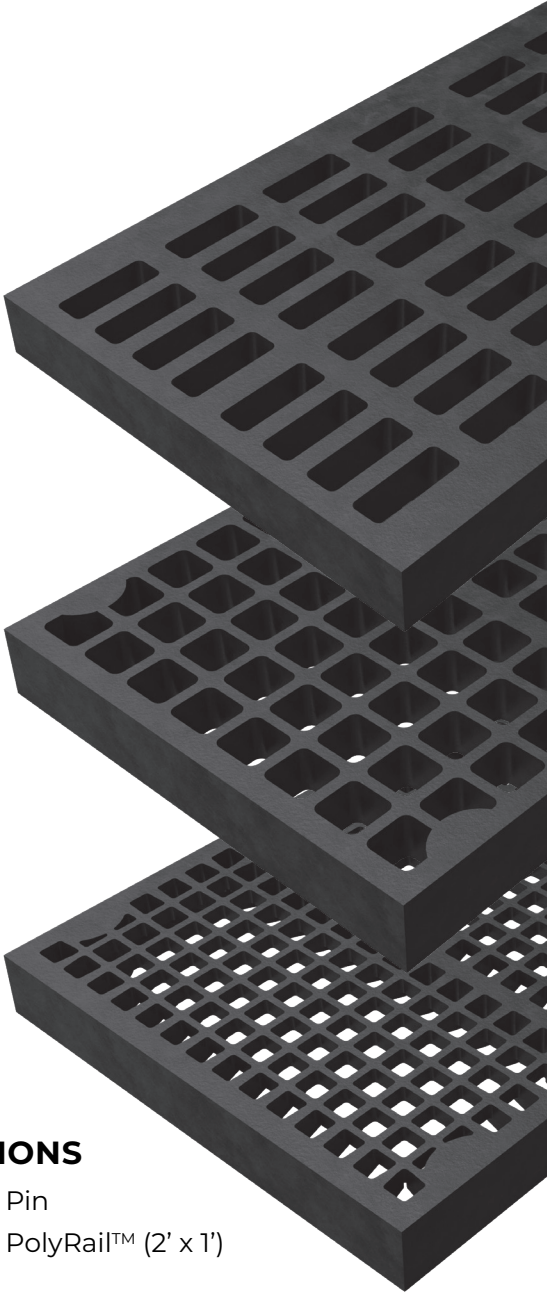
ULTRAMAX NEW!

Open Area: Up to \approx 57.6%
Priority: Open Area

Patent Pending

Aperture Options

Square



FASTENING OPTIONS

- PolySnap®

Pin & Sleeve

Bolt-Down
- Pin

PolyRail™ (2' x 1')

SURFACE FEATURE OPTIONS

- Dams
- Skid Bars

APERTURE	SIZE RANGE
VR	0.43" – 3.54" (11mm – 90mm)
Slotted	0.02" x 0.39" – 7" x 8.5" (0.05mm x 10mm – 177.8mm x 215.9mm)
Square	0.08" – 5.98" (2mm – 152mm)
SVR	0.39" x 1.57" – 5.55" x 10.04" (10mm x 40mm – 141mm x 255mm)
Round	3.46" – 9.06" (88mm – 230mm)
HVR	1.02" – 4.92" (26mm – 125mm)

ARMADEX®



ARMADEX is our line of heavy impact, bolt-down panels. Every panel is backed with heavy duty steel plates for maximum wear life, durability, and protection. Used in scalping, high-impact, and heavily loaded applications, ARMADEX can be customized with a variety of styles, aperture shapes, sizes and thicknesses, and fastenings.

PANEL SIZE

Standard: ~2'x2' and ~4'x4'.
Custom sizing available.

STEEL BACKED CERAMIC PANELS

Protect your deck support in high impact zones with our new ARMADEX Ceramic Panel. Get the highest level of protection integrated directly onto your deck to extend the life of your stringers and frames.

Description	Part Number
63mm thick – 1' x 2' – Angle, Channel, Tube	BIQ252412-02
65mm thick – 1' x 1' – Angle, Channel, Tube	BIQ251212-01
65mm thick – 1' x 1' – Pipetop™	065FPFINXA-2

CERAMIC SHAPE OPTIONS



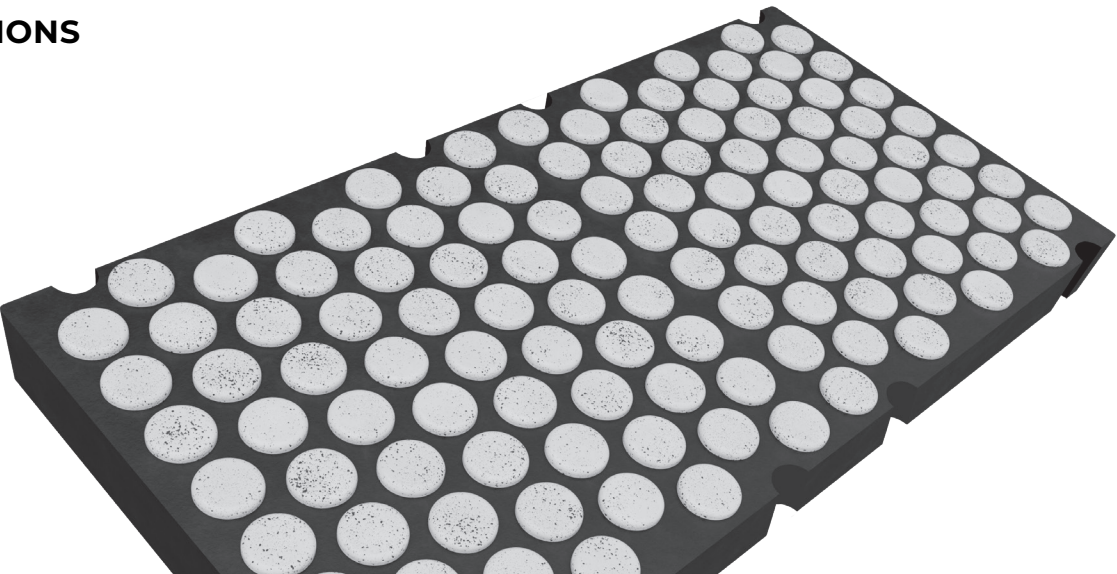
Round



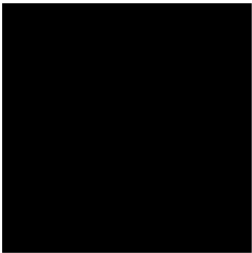
Square

FASTENING OPTIONS

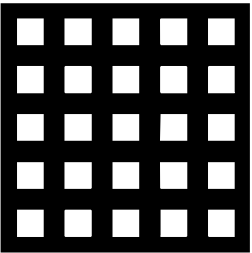
Bolt-Down
Pin & Sleeve (1' x 1')



STEEL BACKED RUBBER

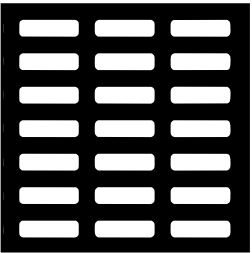


Solid



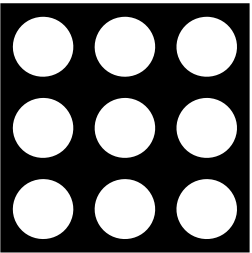
Square

Size Range:
0.75" – 8"
19.05mm – 203.2mm



Slotted

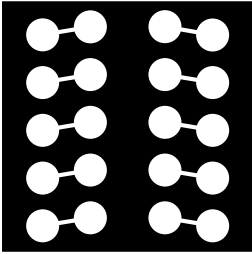
Size Range:
0.31" x 1.1" – 5" x 11.92"
9.17mm x 27.94mm –
127mm – 302.77mm



Round

Size Range:
2" – 8"
50.8mm – 203.2mm

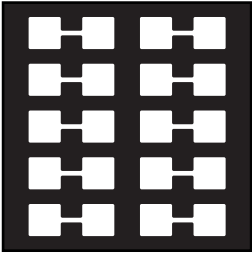
NEW!



8VR

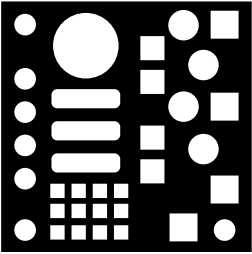
Size Range: 2" – 8"
50.8mm – 203.2mm

NEW!



HVR

Size Range: 2" – 8"
50.8mm – 203.2mm



Custom

Combine different aperture options
for a customized solution.

FASTENING OPTIONS

Bolt-Down
Pin & Sleeve

SURFACE FEATURE OPTIONS

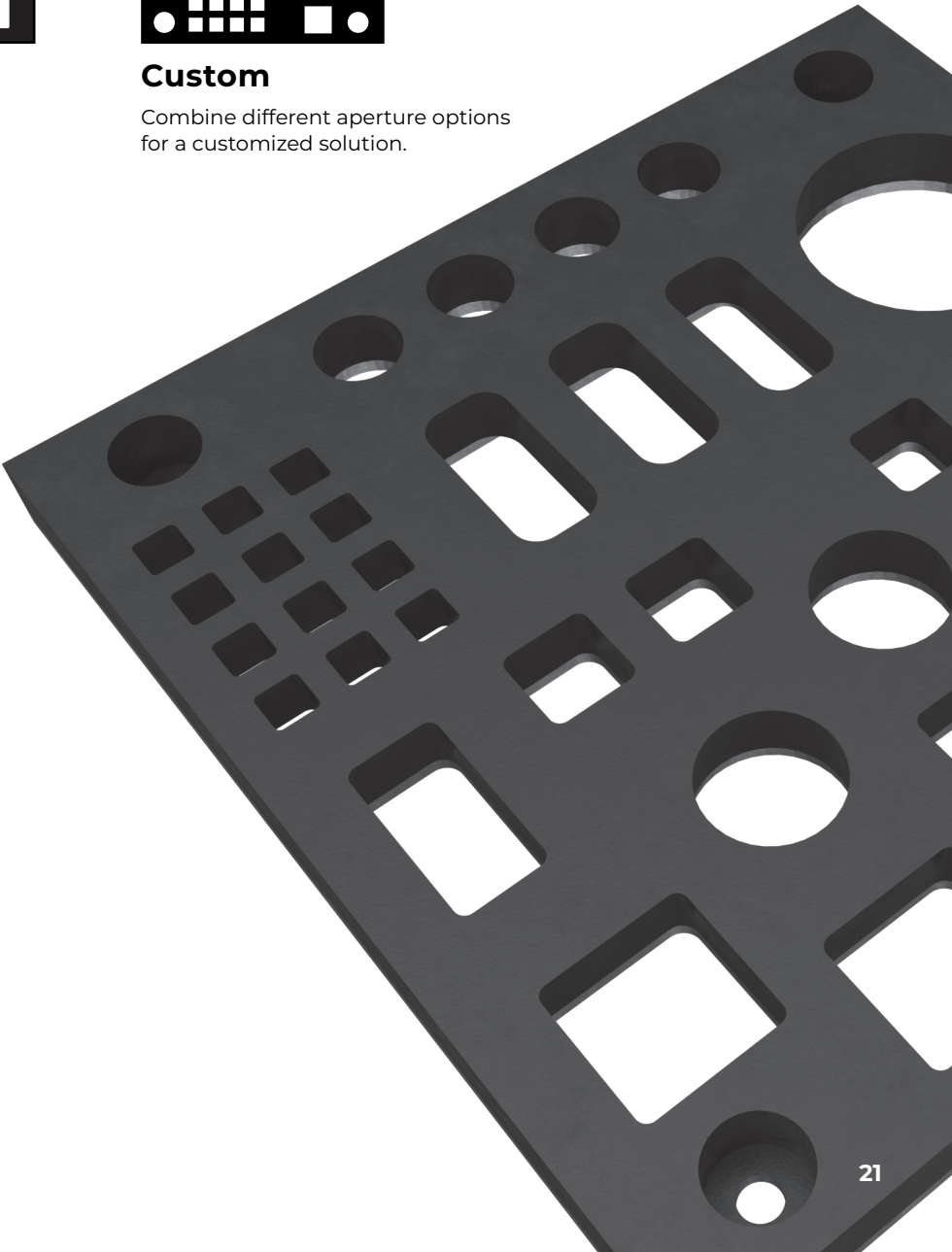
Bolt-On Dams
Skid Bars

CUSTOMIZABLE FEATURES

Bolt Hole Location
Skid Bars
Aperture Placement
Size & Thickness of Panel

MATERIAL OPTIONS

XR, XR100, XR200, FXR, FXR100



METALDEX™



Our line of modular wire media has a variety of options available ranging from welded wire to self-cleaning wire designs. METALDEX offers the convenience of our modular design with the throughput capabilities of wire cloth. Pair with other Polydeck modular media for best results.

PANEL SIZE

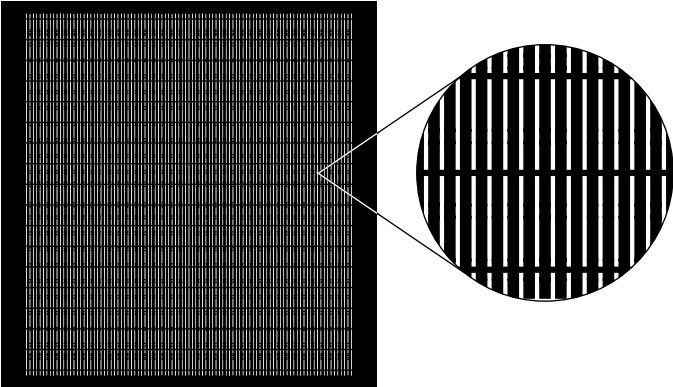
XPT: 1' x 2'
ULTRACLEAN: 1' x 2'
PRO: 2' x 2'

PANEL THICKNESS

XPT: 30mm, 65mm
ULTRACLEAN: 30mm, 40mm
PRO: 45mm

PANEL STYLES

PRO



FASTENING OPTIONS

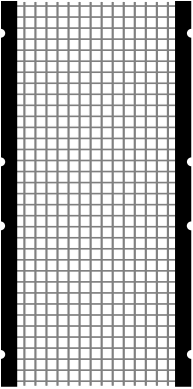
- Bolt-Down
- Pin (XPT, ULTRACLEAN)
- PolyRail (PRO)

ADD-ON FEATURES

- Dams (PRO)
- Deflectors (PRO)

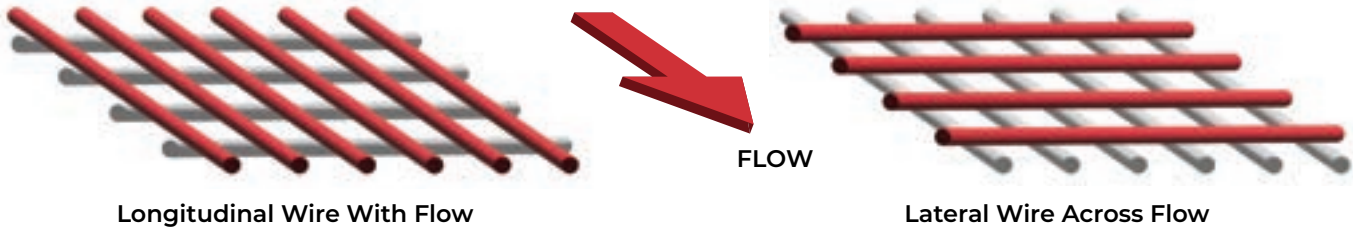
Opening	Description	Part Number
0.5"	Hard Chrome	PRO50HC
0.5"	Hard Chrome w/ 2" Dam	PRO50HCD2
0.5"	Stainless Steel	PRO50SS
0.5"	Stainless Steel w/ 2" Dam	PRO50SSD2
0.65"	Hard Chrome	PRO65HC
0.65"	Hard Chrome w/ 2" Dam	PRO65HCD2
0.65"	Stainless Steel	PRO65SS
0.65"	Stainless Steel w/ 2" Dam	PRO65SSD2
0.65"	Stainless Steel w/ Deflectors	PRO65SSE
0.75"	Hard Chrome	PRO75HC
0.75"	Hard Chrome w/ 2" Dam	PRO75HCD2
0.75"	Stainless Steel	PRO75SS
0.75"	Stainless Steel w/ 2" Dam	PRO75SSD2
1 mm	Hard Chrome	PRO100HC
1 mm	Hard Chrome w/ 2" Dam	PRO100HCD2
1 mm	Stainless Steel	PRO100SS
1 mm	Stainless Steel w/ 2" Dam	PRO100SSD2
2 mm	Stainless Steel	PRO200SS

XPT

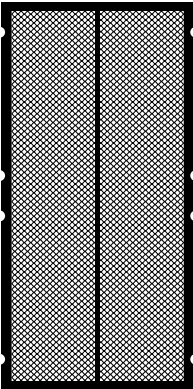


Modular welded wire. Open area comparable to wire cloth. Available in “with flow” or “across flow” configurations.

Opening	Wire Diameter	Open Area	Lateral Wire Across Flow	Longitudinal Wire w/ Flow
1/2"	3/16"	44.4%	MW050RC21A	MW050SC21A
9/16"	1/4"	38.2%	M056RC26B	M056SC26B
3/4"	1/4"	45.9%	M075RC26B	M075SC26B
7/8"	1/4"	49.0%	M088RC26B	M088SC26B
1"	5/16"	50.0%	M100RC26C	M100SC26C
1-1/8"	5/16"	49.2%	M113RC26C	M113SC26C
1-1/4"	5/16"	48.8%	M125RC26C	M125SC26C
1-1/2"	3/8"	49.6%	M150RC26D	M150SC26D
1-3/4"	3/8"	55.9%	M175RC26D	M175SC26D
2"	3/8"	55.6%	M200RC26D	M200SC26D
2-1/4"	3/8"	59.8%	M225RC26D	M225SC26D
2-1/2"	3/8"	60.4%	M250RC26D	M250SC26D
3"	1/2"	63.8%	M300RC26E	M300SC26E



NEW!
ULTRACLEAN

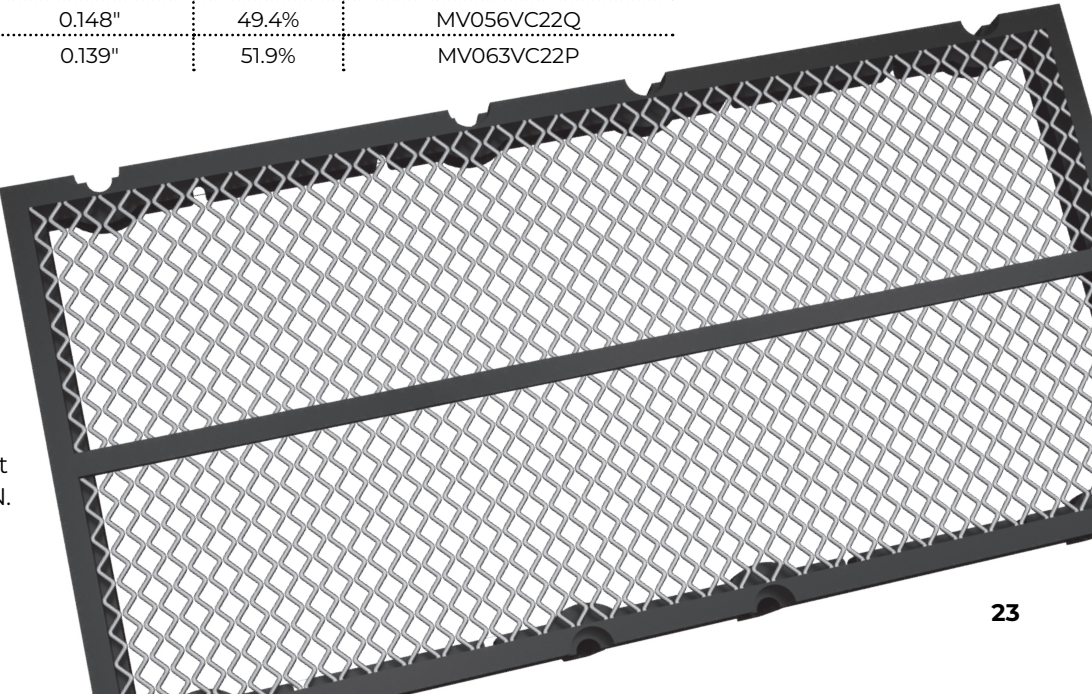


Modular “zigzag” wire design. Adds secondary motion for self-cleaning capabilities.

Opening	Wire Diameter	Open Area	Part Numbers
3/32"	0.060"	32.4%	MV009VC22J
1/8"	0.054"	38.9%	MV013VC22J
3/16"	0.072"	40.8%	MV019VC22K
1/4"	0.080"	44.2%	MV025VC22L
5/16"	0.092"	45.7%	MV031VC22M
3/8"	0.105"	47.6%	MV038VC22N
1/2"	0.148"	45.5%	MV050VC22Q
9/16"	0.148"	49.4%	MV056VC22Q
5/8"	0.139"	51.9%	MV063VC22P

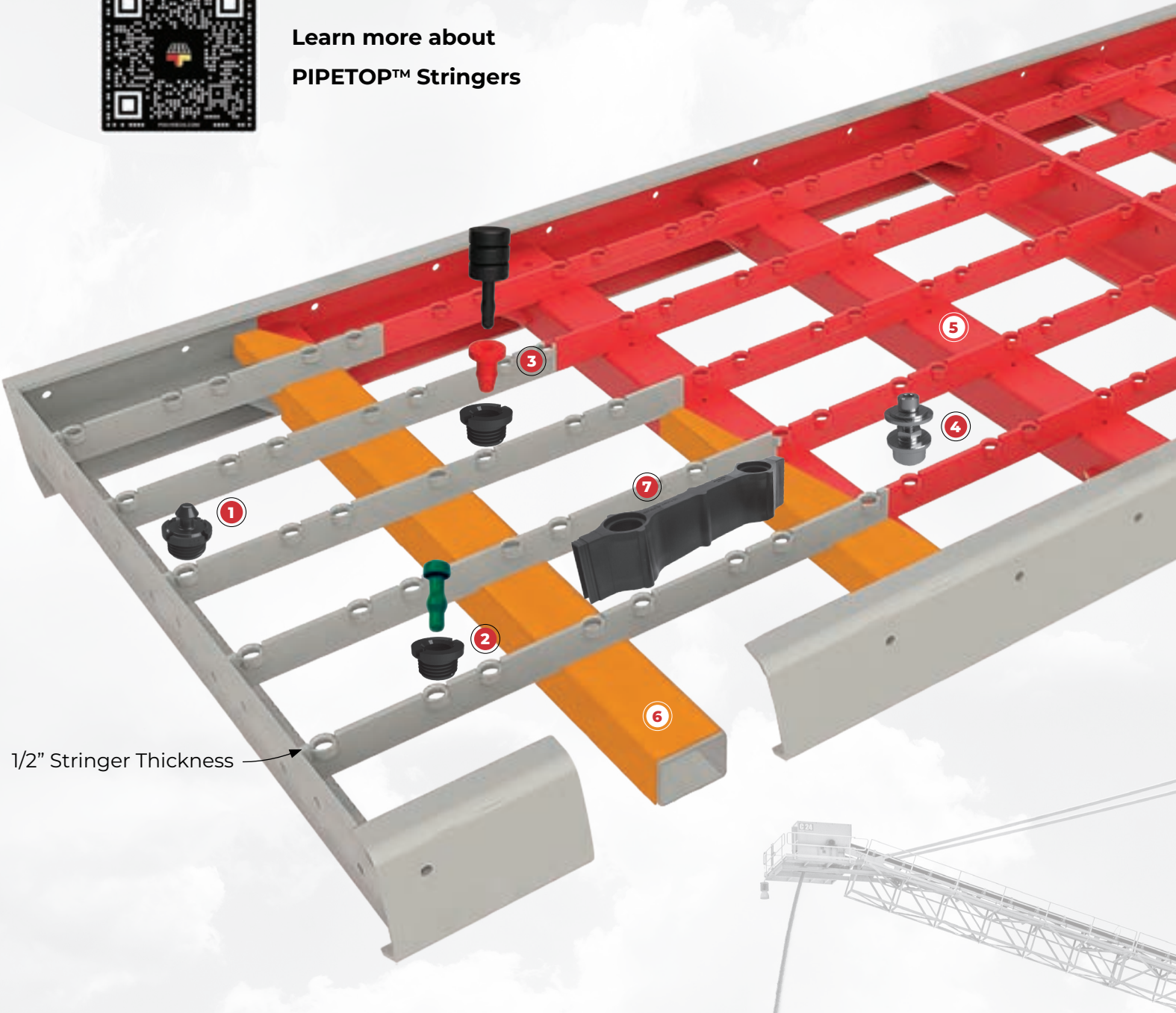
NEW!
METALDEX™
ULTRACLEAN

When near size carries over the discharge end of your deck, clean it up by upgrading to ULTRACLEAN.





Learn more about
PIPETOP™ Stringers



FASTENING OPTIONS

- PolySnap®
- Pin
- Pin & Sleeve
- Bolt-Down

PROTECTIVE ADD-ONS

- PROTEX® RC Rubber Lining
- PROTEX® UC Urethane Coating
- PROTEX® PTP Stringer Protectors

AVAILABLE CONFIGURATIONS

- Individual Stringer Rails
- Pre-spaced Stringer Jigged Assemblies
- Complete Deck Frames

POLYDECK PIPETOP™ SYSTEM

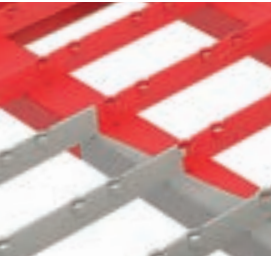
The POLYDECK PIPETOP SYSTEM is an OEM agnostic media fastening system designed with versatility and open area in mind. With custom sizing, wear-protection add-ons, and multiple fastening styles, the PIPETOP SYSTEM is designed to fully leverage the potential of our products and bring you best-in-class open area and wear life to your screens.

FEATURES

- Configured to fit your preferred OEM deck size requirements.
- ½” wide stringer rails for maximum throughput.
- Independent fastening ferrule inserts for individual replacement as need arises.



1 PolySnap®



5 PROTEX® UC Urethane Coating



2 Pin



6 PROTEX® RC Rubber Coating



3 Pin & Sleeve



7 PROTEX® PTP Stringer Protectors



4 Bolt-Down

STRINGERS AND CONVERSIONS

Polydeck support systems are reliable and designed to maximize the performance of your screens.

Polydeck stringer systems are customized to fit your screen, withstand breakage, and last longer in corrosive environments.



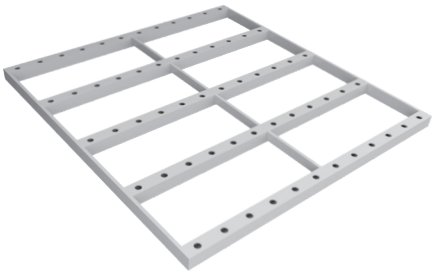
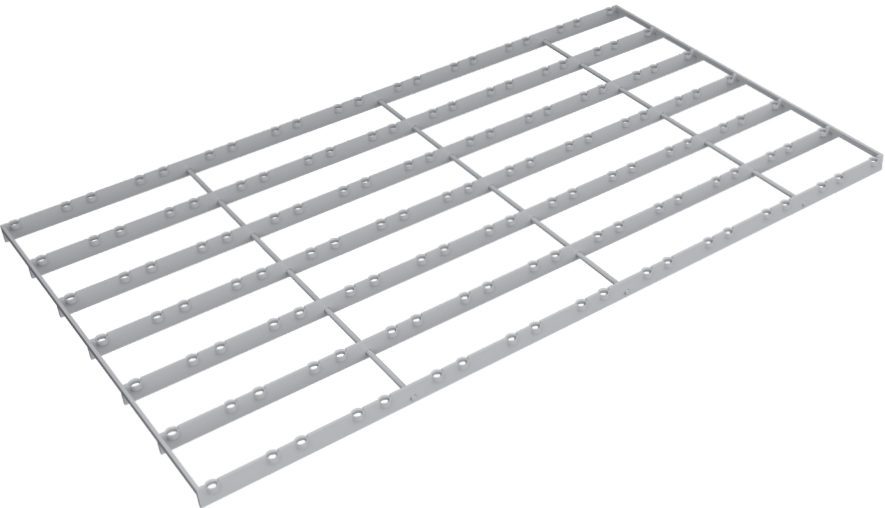
FIND OUT MORE ABOUT CONVERSION KITS

PROTECTIVE ADD-ONS

- PROTEX® RC Rubber Lining
- PROTEX® UC Urethane Coating

PIPETOP™

The PIPETOP stringer system's defining feature is its highly durable 1/2" wide steel rails. Designed with maximum open area and fastening versatility in mind, the PIPETOP stringer system is the industry's top-performing choice for media support structures.



Tube Stringers

Polydeck's tube stringers are designed with laser cut precision to withstand the test of time for increased reliability and maximized screen media support.



Tee Stringers

Polydeck's tee stringers enable bolt-down fastening for ARMADEX panels in applications with large volumes of slurry. This solution minimizes areas where slurry can wash between panels and damage stringers.

Individual/Bundled Conversions:

Typically provided to OEMs to install on their frames or to be used as replacement stringers for existing machines.

Jigged Conversions:

Stringer rails can be jigged into user-friendly assembly for delivery to an operation site for easy conversion of an existing deck frame to a Polydeck system.

Complete Support Frames:

Stringer rails can be welded onto deck frames for an easy bolt-in installation to replace a worn out deck frame in an existing vibrating screen.

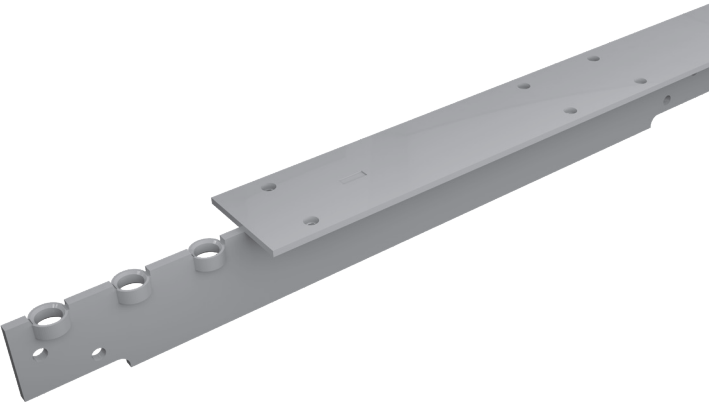


Image shows PIPETOP Tee Stringer

FRAMES

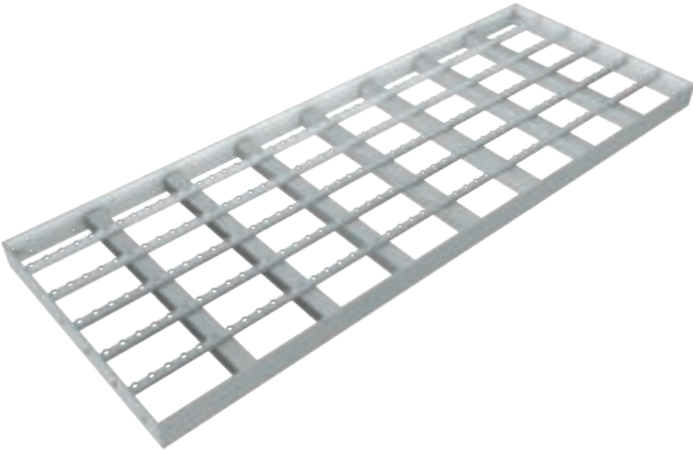
ADD-ON FEATURES



Feed Boxes

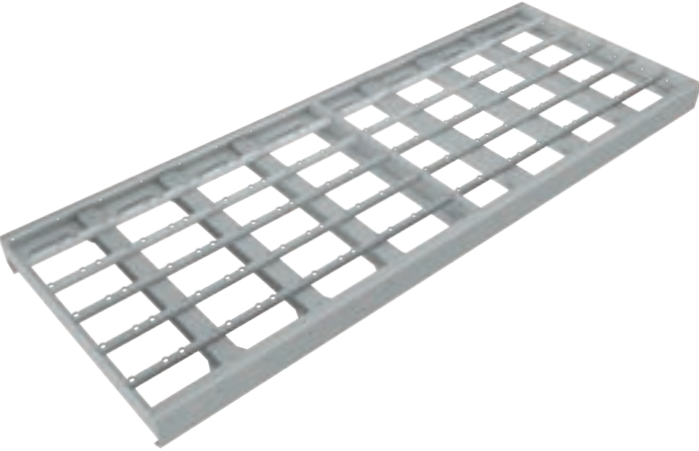


Discharge Lips



Standard Frames

Complete deck and railing system designed to fit OEM Screen Specs.



XD Frames

Extreme duty for extra durability.

STRINGER OPTIONS

- PIPETOP™
- PolyRail™
- Tee

PROTECTIVE ADD-ONS

- PROTEX® RC Rubber Lining
- PROTEX® UC Urethane Coating

STRINGER OPTIONS

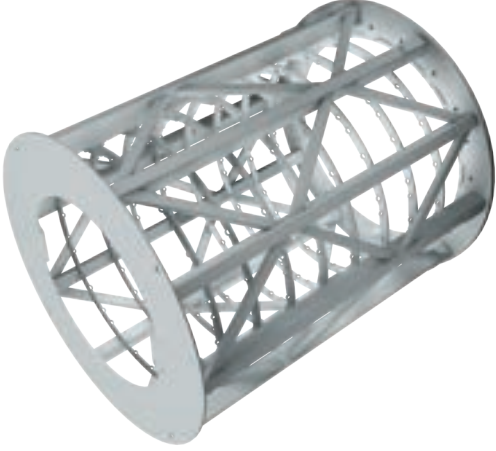
- PIPETOP™
- PolyRail™
- Tee

PROTECTIVE ADD-ONS

- PROTEX® RC Rubber Lining
- PROTEX® UC Urethane Coating

TROMMELS

Custom-designed with the option to add a flippable design to extend wear life.



PIPETOP™ Trommels

PIPETOP Trommels range up to 42-panel circumference x 17' long. Integrates PIPETOP stringers and Polydeck modular screen media for ultra-high open area.

WORKING SURFACE DIAMETER

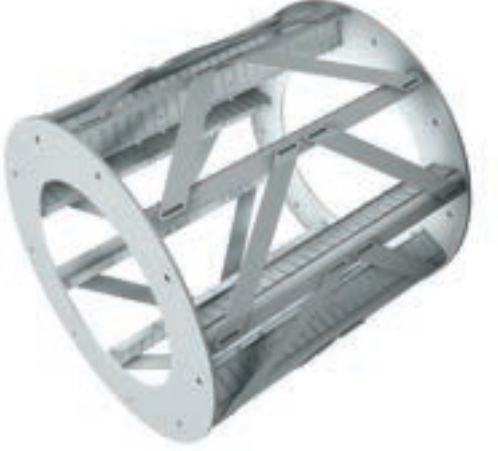
42~160"

SURFACE FEATURE OPTIONS

- Scrolls
- Dams
- Ball Catcher
- Surge Plate

PROTECTIVE ADD-ONS

- PROTEX® RC Rubber Lining
- PROTEX® UC Urethane Coating



PROTOP™ Trommels

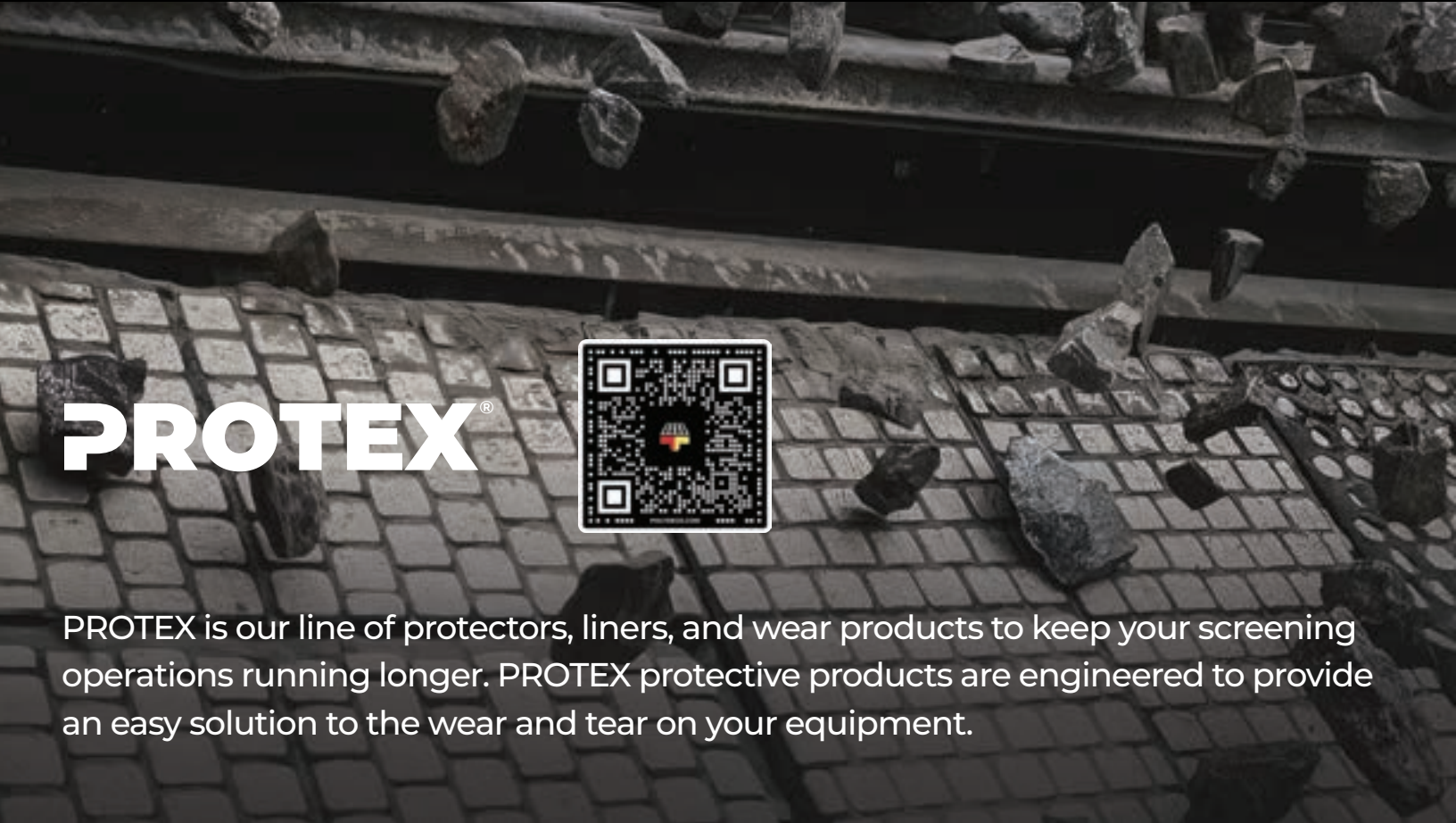
PROTOP Trommels range from 9-panel circumference x 4' long to 14-panel circumference x 6' long. Utilizes PROTOP Stringers and PolySnap panels for extended wear life and durability.

WORKING SURFACE DIAMETER

- | | |
|----------|----------|
| 9 ~ 29" | 12 ~ 41" |
| 10 ~ 33" | 13 ~ 45" |
| 11 ~ 37" | 14 ~ 49" |

SURFACE FEATURE OPTIONS

- | | |
|---------|--------------|
| Scrolls | Ball Catcher |
| Dams | Wear Ring |



PROTEX®



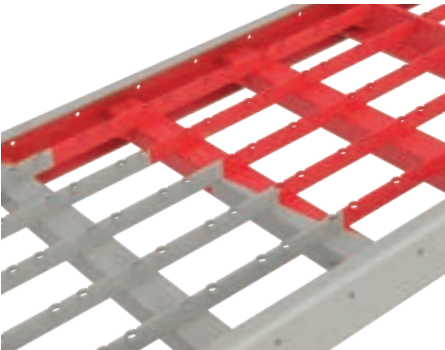
PROTEX is our line of protectors, liners, and wear products to keep your screening operations running longer. PROTEX protective products are engineered to provide an easy solution to the wear and tear on your equipment.



PROTEX P

Designed to protect stringers, cross members, PIPETOP™ stringers and PolyRail™ stringers.

PIPETOP Protector	Part Number
24" Length x Full Size Height	F6000588
36" Length x Full Size Height	F6000589
24" Length x 1" Height	F6000592
36" Length x 1" Height	F6000593
Angle Protector	051014001



NEW! PROTEX C

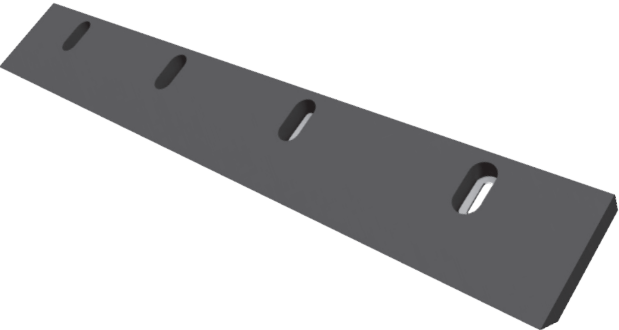
Rubber Lining (RC) or Urethane Coating (UC) to protect frames and stringers from highly abrasive applications or high-impact applications.



PROTEX SL

Side Wear Plates available in polyurethane, rubber and UHMW depending on your application needs.

Custom sizing available.

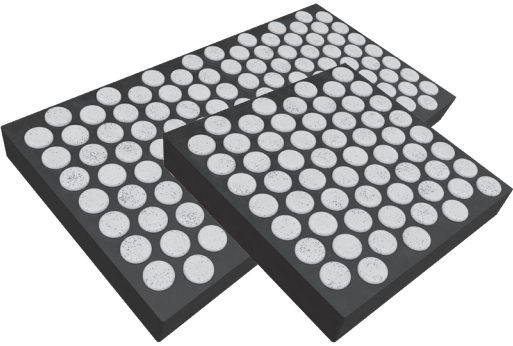


PROTEX CBL

Conveyor Belt Liners to protect your conveyor belt sides from high loads and prevent material loss.

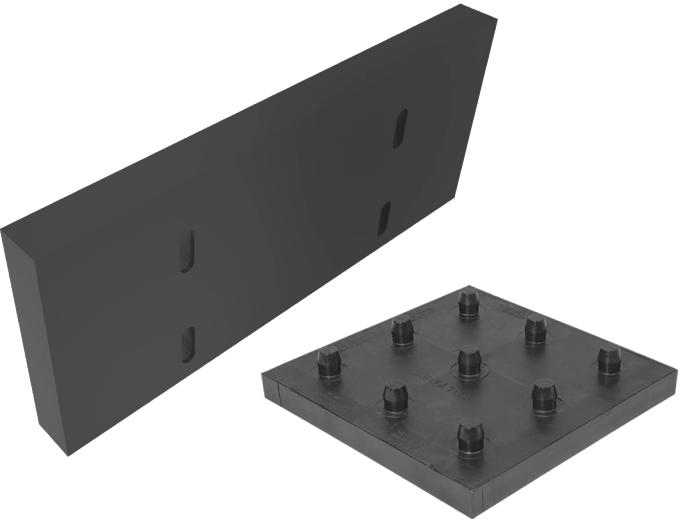
Thickness	1", 1.5", 2"
Height	6", 7", 8", 9", 10", 12"
Length	Custom
Roller Angle Fit	20°, 30°

Custom sizing and angle fit available.



PROTEX CL

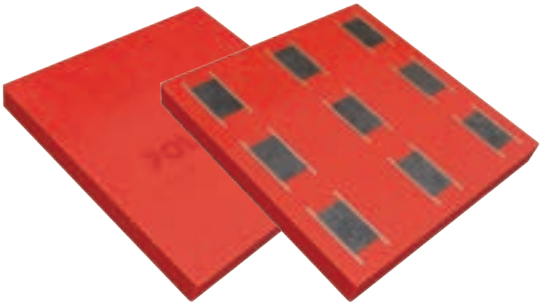
Ceramic Liners are a versatile bolt-in solution for high wear applications. Available in 1x1 and 1x2 configurations in circular or square ceramic options.



PROTEX L

Liners for feed chutes, feed boxes, discharge lips and transfer points that range in material to prevent the premature replacement of your equipment. Available in polyurethane, rubber or heavy-duty rubber.

Rubber Liners	Part Number
25mm thick – Standard Duty – 1' x 1'	SDRDXL11A
25mm thick - Standard Duty – 1' x 1'	SDRDXL12A
25mm thick - Standard Duty – 1' x 2'	HDRDXL11A
25mm thick - Standard Duty – 1' x 2'	HDRDXL12A
Bolt Hole Plug	BDRPLUG
Polyurethane Liners	Part Number
30mm thick – 12" x 6"	030LG1BSF
30mm thick – 12" x 8"	030LG1BSG



PROTEX ML 030FMAG1YSA

Magnetic Liners for feed chutes, feed boxes, discharge lips and transfer points to prevent the premature replacement of your equipment. Available in polyurethane.

ACCESSORIES



Fine-tune your screens with industry-leading screening accessories from Polydeck. Complete your screening solution with accessories that are affordable, effective, and durable.

SPRAY NOZZLES



Our patented self-cleaning polyurethane spray nozzle ensures an even water distribution across your deck without causing damage to your screen or media. Available in multiple shapes and setups, its intelligent design can handle any volume of water your application demands.

SPRAY NOZZLE FLOW CAPACITY

Opening Capacity	15PSI	20PSI	30PSI	40PSI	60PSI	80PSI	100PSI
5mm Capacity (GPM)	2.6	3.2	3.8	4.3	5.5	6.3	7.2
7mm Capacity (GPM)	4.5	5.4	6.3	7.5	9.0	10.6	12.0
9mm Capacity (GPM)	5.3	6.1	7.3	8.5	10.6	12.0	13.0

FULL ASSEMBLIES

Part Number	Description
F6000335	No opening. Drilled by customer.
F6000336	5mm opening
F6000338	7mm opening
F6000340	9mm opening
F6000346	11mm opening
F6000347	13mm opening

Huck Bolt Cover



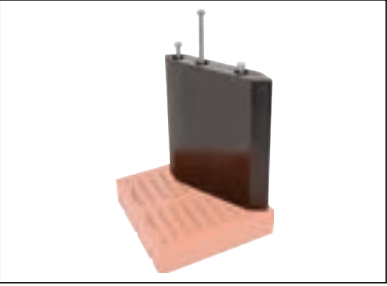
5/8"	F6000575
3/4"	F6000578

Ceramic Huck Bolt Cover



BDRPLUG-CER50

Diverter Kit



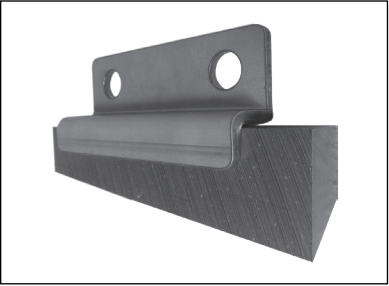
DiverterKit-S	30mm – 45mm
DiverterKit-M	30mm – 55mm
DiverterKit-L	30mm – 100mm
DiverterKit-XL	55mm – 100mm

PolyRail™ Adapter Strip



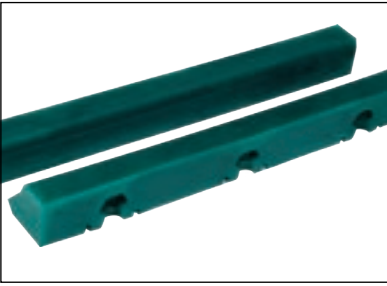
FRAD48000

Angle Clip & Wedge



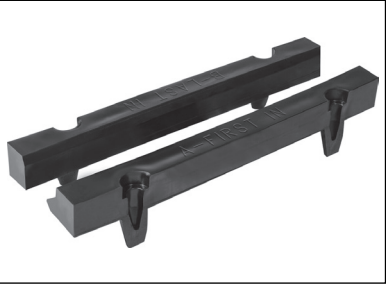
Angle Clip	020776003
Left Wedge	F4000028
Right Wedge	F4000028

Transition Filler Block - Snap-Style



Side A	PD2001D06
Side B	PD2001D04

Transition Filler Block - Pin Style



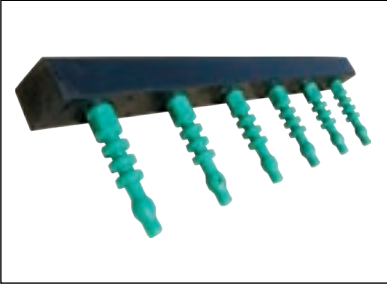
Side A	PD2001D7
Side B	PD2001D08

Snarski Pin Puller



Complete Pin Puller	131115000P
Replacement Arm	F6000700
Replacement Pivot Leg	F6000701
Replacement Jaw	F6000702

ProStrip



Can be used as protector, dam, diverter, or stringer protector. Height of pins can be adjusted. Comes in 2-foot long section.

Ferrule Insert Install Kit



Pin Ferrule Kit	PININSTKIT
PolySnap® Ferrule Kit	PD2001D08
Large Head PolySnap® Ferrule Kit	POLYSNPLHINST

Ferrule Insert Install Tool



F4000382

PINS

30MM PANELS



F6000410
Regular shaft for Poly media.



F6000413
Oversized shaft for rubber media.



F6000415
Extended shaft (10mm) for angle stringer w/o angle protector.



F6000587
Extended shaft (15mm) for angle stringer w/ angle protector.

40MM PANELS



F6000418
Regular shaft.



F6000431
Extended shaft (15mm) for angle stringer w/ angle protector.



F6000424
Oversized shaft for rubber media.



F6000563
Extended shaft (15mm) for angle stringer w/ angle protector.

45MM PANELS



F6000426
Regular shaft.



F6000429
Oversized shaft for rubber media.



F6000431
Extended shaft (15mm) for angle stringer w/ angle protector.



F6000534
Poly sleeve for use with pins F6000533 and F6000538.

50MM PANELS



F6000435
Oversized shaft for rubber media.



F6000432
Extended shaft (15mm) for angle stringer w/ angle protector.



F6000433
Standard shaft (50mm)



F6000411
For some dewatering applications. 30mm, poly half-pin; Regular shaft.

55, 60, 65MM PANELS



F6000443
Regular shaft.



F6000445
Oversized shaft for rubber media.



F6000561
Extended shaft (15mm) for angle stringer w/ angle protector.



F6000533
Pin & sleeve. 65mm poly pin.

80MM PANELS



F6000454
Oversized shaft for rubber only.



F6000538
Pin & sleeve. 80mm poly pin.



F6000586
Extended shaft (15mm) for angle stringer w/ angle protector.

100MM PANELS



F6000408
Oversized shaft for rubber media.

SERVICES

PRO ANALYSIS: SCREEN PERFORMANCE EVALUATIONS

Ensure your vibrating screens are operating at their peak with Polydeck's Pro Analysis service. This in-depth evaluation is designed to provide you with critical data-driven insights that help maintain your vibrating screen within the manufacturer's designed limits, thereby extending operational life and minimizing unplanned downtime.

What We Inspect



SCAN TO SCHEDULE YOUR
POLYDECK PRO ANALYSIS

What are we analyzing?

- Screen Speed, Stroke, & G-Force (with and without load)
- Multi-Dimensional Side Plate Movements (with and without load)
- Support Structure Movements (with and without load)
- Natural Frequency Testing (Bump Test)
- Operational and Stroke Measurements

Disclaimer: Technicians are trained to meet Mine Safety and Health Administration (MSHA) standards, requiring access to both sides of the screen and suitable platforms for safe testing. A brief meeting will be held post-analysis to discuss findings and recommendations directly with your team.

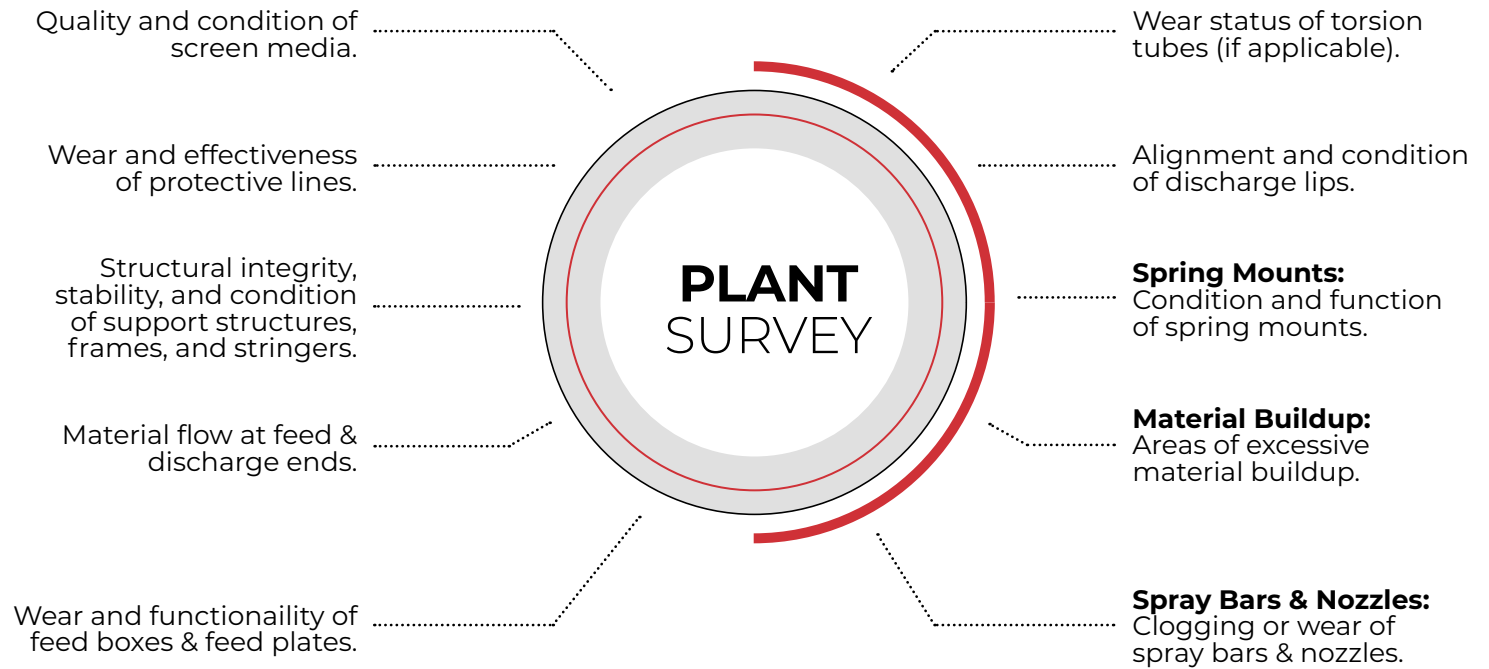
PLANT SURVEY

The Polydeck Plant Survey is a comprehensive, free inspection service of your decks, screen media, and application assessment. Available to customers* up to once per quarter per site, this service is designed to enhance the performance and longevity of each deck of your screen.



SCAN TO SCHEDULE YOUR
POLYDECK PLANT SURVEY.

What We Inspect



Benefits of the Polydeck Plant Survey

- Detailed, actionable roadmap to enhance screening efficiency and safety.
- Early detection of issues reducing throughput and wear life.
- Regular checks and maintenance guidance to extend deck lifespan and reduce downtime.
- Early detection of necessary repairs.
- Recommendations for adjusting or upgrading screen media and enhancing efficiency.

Screening Expertise. We Got This.

Schedule a Pro Analysis
consultation with Polydeck
and start optimizing your
screen today.

BOOK A CONSULTATION TODAY



PARTICLE SIZE CROSS REFERENCE GUIDE				
Inches	Millimeters	Decimal	Nearest U.S. Sieve Equivalent	Nearest Tyler Mesh Equivalent
1-1/2"	38.100	1.5000		
1-3/8"	34.925	1.3750		
1-1/4"	31.750	1.2500		
1-1/8"	28.575	1.1250		
1"	25.400	1.0000		
7/8"	22.225	0.8750		
3/4"	19.050	0.7500		
5/8"	15.875	0.6250		
1/2"	12.700	0.5000		
7/16"	11.113	0.4375		
3/8"	9.525	0.3750		
5/16"	7.938	0.3125		
9/32"	7.144	0.2810		
1/4"	6.350	0.2500		
7/32"	5.556	0.2190		
3/16"	4.763	0.1875	No. 4	4 Mesh
11/64"	4.366	0.1750		
5/32"	3.969	0.1560	No. 5	5 Mesh
9/64"	3.572	0.1406	No. 6	6 Mesh
1/8"	3.175	0.1250		
	2.830	0.1110	No. 7	7 Mesh
7/64"	2.778	0.1094		
3/32"	2.381	0.0937	No. 8	8 Mesh
5/64"	1.984	0.0781	No. 10	9 Mesh
	1.679	0.0661	No. 12	10 Mesh
1/16"	1.588	0.0625		
	1.410	0.0555	No. 14	12 Mesh
3/64"	1.191	0.0469	No. 16	14 Mesh
	1.000	0.0394	No. 18	16 Mesh
	0.841	0.0331	No. 20	20 Mesh
1/32"	0.794	0.0313		
	0.707	0.0278	No. 25	24 Mesh
	0.594	0.0234	No. 30	28 Mesh
	0.500	0.0197	No. 35	32 Mesh
	0.419	0.0165	No. 40	35 Mesh
1/64"	0.397	0.0156		
	0.354	0.0139	No. 44	42 Mesh
	0.297	0.0117	No. 50	48 Mesh
	0.250	0.0098	No. 60	60 Mesh
	0.210	0.0083	No. 70	65 Mesh
	0.177	0.0070	No. 80	80 Mesh
	0.150	0.0059	No. 100	100 Mesh
	0.125	0.0049	No. 120	115 Mesh
	0.105	0.0041	No. 140	150 Mesh
	0.088	0.0035	No. 170	170 Mesh
	0.075	0.0029	No. 200	200 Mesh
	0.063	0.0025	No. 230	250 Mesh
	0.053	0.0021	No. 270	270 Mesh
	0.044	0.0017	No. 325	325 Mesh
	0.037	0.0015	No. 400	400 Mesh

OEM SCREEN WIDTH STANDARDS	
Original Equipment Manufacturer	Standard Screen Width
Astec Industries	
JCI	nom + 4" or + 1 1/2" if 5" wide
Kolberg-Pioneer (KPI)	nom + 0"
Telsmith	nom + 5/8" (VibroKing) nom + 0" (SpecMaker)
Conn-Weld	nom + 1/4"
Deister	nom + 1/2"
FLSmidth Ludowici	nom + 1/4" (varies)
Metso Corporation	
Allis-Chalmers	nom + 1/4"
Hewitt-Robbins	nom + 4" (newer machines) nom + 1/2" (older machines)
Nordberg Series	nom + 0" (varies)
Svedala	nom + 1/4"
Schenck Process	nom + 10mm (~3/8")
SECO	nom + 0"
Tabor Machine Company	nom + 1/4"
Terex Mineral Processing Systems	
Cedarapids Series	nom + 4" (varies) or 1 1/2" if 5" wide
Simplicity Series	nom + 2"
TRIO Engineered Products, Inc.	nom + 4" (horizontal) nom + 2" (inclined)
W.S. Tyler	nom + 0"





POLYDECK®

CORPORATE HEADQUARTERS

1790 Dewberry Road
Spartanburg, SC 29307
Call: +1-864-579-4594
info@polydeck.com

POLYDECK CHILE, LTDA.

Camino La Vara 03400
8060123 San Bernardo
Santiago, Chile
Región Metropolitana

POLYDECK PERU S.R.L.

Calle Jacinto Ibañez 315
Urb. Parque Industrial Megacentro
Almacén D112a, D112b
Arequipa, Peru

polydeck.com

Contactenos a +56 2 23801319

Contactenos a +51 9 4596 6996

