



# STONEWAY SUMNER

CASE STUDY

[polydeck.com](http://polydeck.com)



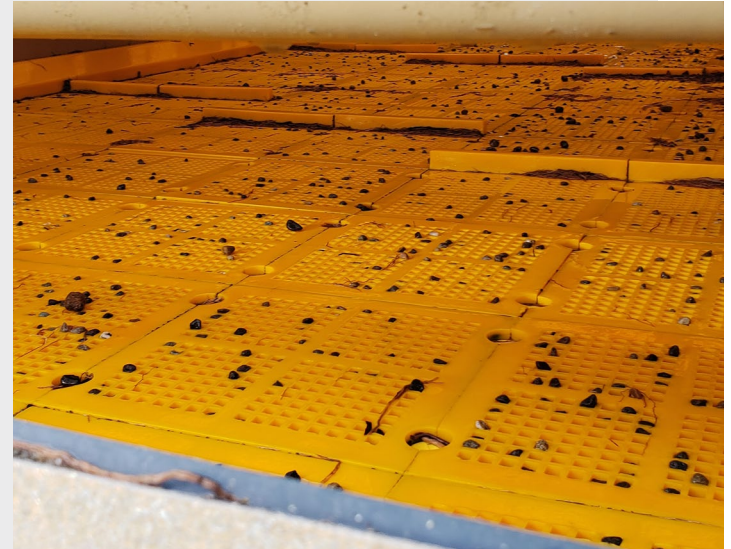
# CHALLENGE

Stoneway Sumner was experiencing plugging on the wash screen and blinding on the dry screen in their new plant that their builder could not resolve. Their screens were extremely inefficient due to these issues forcing them to shut down their dry screen and use a portable unit instead. Labor costs to keep the plant clean and operational exceeded the value of the material being produced.

## OPERATING CONDITIONS

- **Feed:**  
Sand and Gravel
- **Feed Rate:**  
400 TPH to Dry Screen  
450 TPH to Wash Screen
- **Notes:**  
Wet climate, dry screen, sticky material,  
near size material

*\* Image shows plugging on competitor panel*



*\* Image shows blinding with competitor panels.*



---

# SOLUTION

## Wash Screen:

Increased aperture size on top deck, installed VR panels on middle and bottom decks

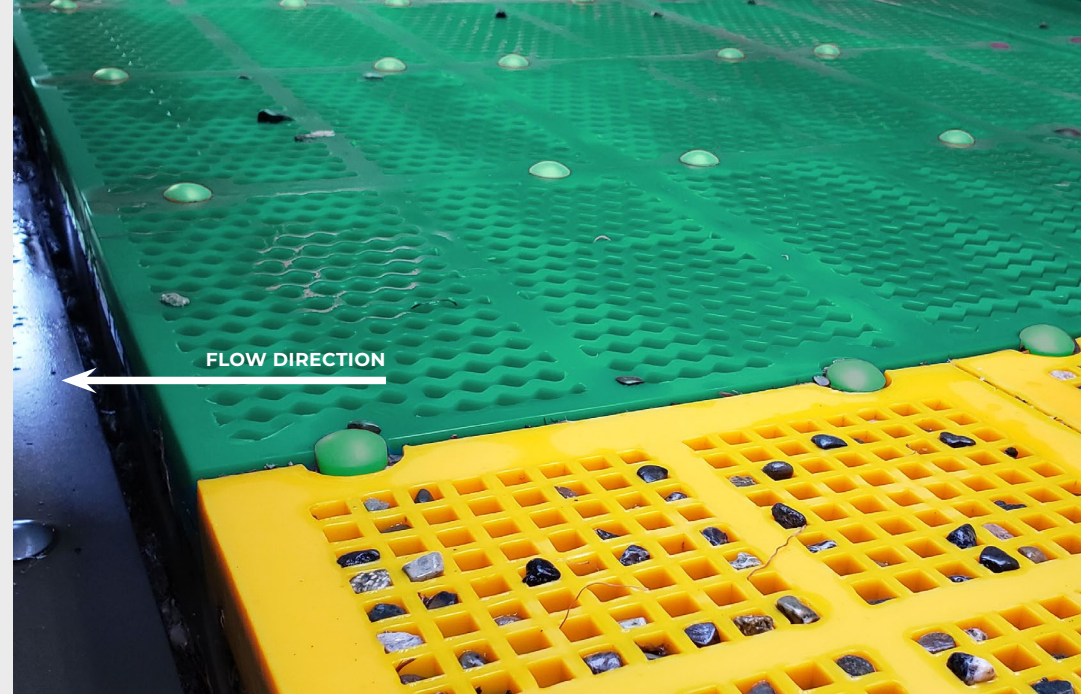
## Dry Screen:

Installed PD40 Rubberdex flexi panels on all decks. Reduced stroke, increased screen speed

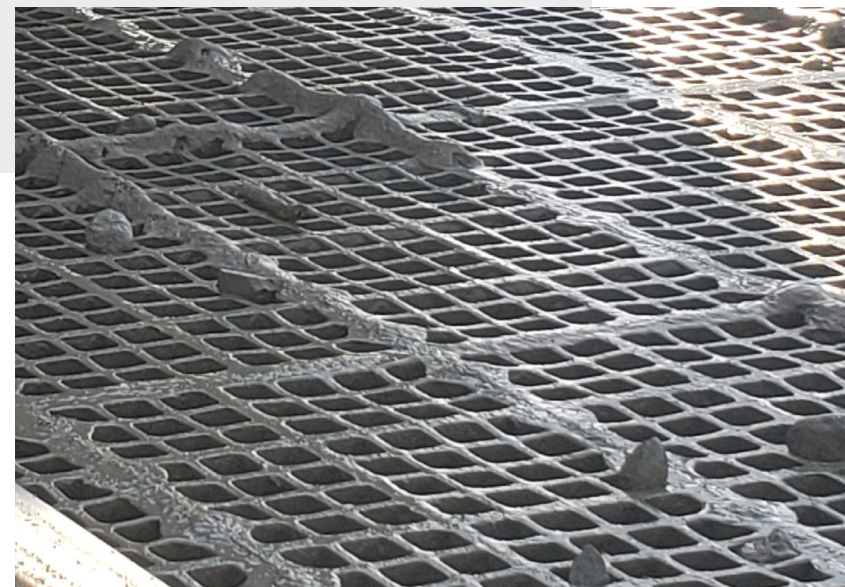
### DID YOU KNOW?

Panel design can have a significant effect on plugging. Small differences in the height and thickness of the bridge, as well as the relief angle, or taper, of those bridges, can make or break a screen deck's ability to safely pass near-sized particles without plugging.

At Polydeck, we have over 50 options for 1/2" apertures alone! We understand how little changes can have big impact on your process and tailor our designs to meet your needs.



\* Image shows Polydeck's VR panel (green panels) significantly reduced plugging in contrast to competitor panels (yellow panels)



\* Image shows the installation of Polydeck panels increased efficiency and throughput due to the elimination of blinding



---

## RESULTS

After installing the Polydeck media, the plant was able to produce in spec material at triple the production, as well as greatly reduce housekeeping requirements.

- Increased throughput
- Stopped plugging, greatly reduced blinding
- Met product gradations
- Produced cleaner products
- Reduced recirculating load
- Stopped material spillage

“

Everybody told me Polydeck wouldn't work and wire was the only way to go because of the extreme stickiness of our material.

I was discouraged and stressed about options, but Polydeck came out and said they could fix it and would completely stand behind the product if it didn't work, so what did I have to lose?

Polydeck media worked immediately upon installation.

