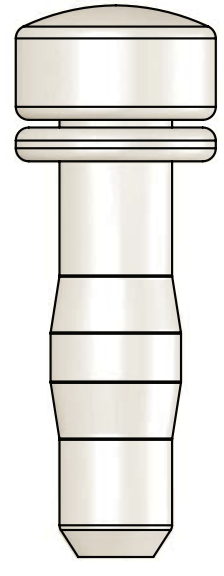


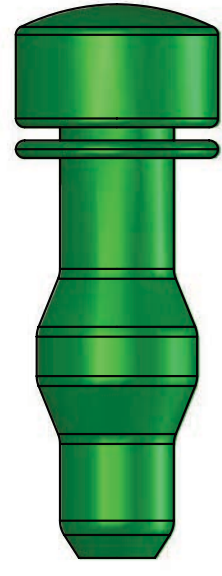
30MM PANELS



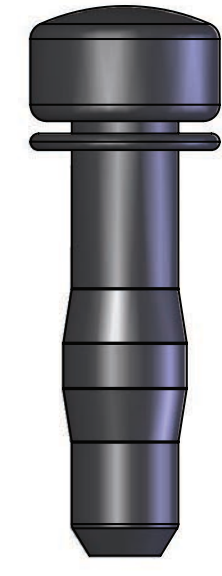
F6000410 - POLY
Regular shaft for poly media.



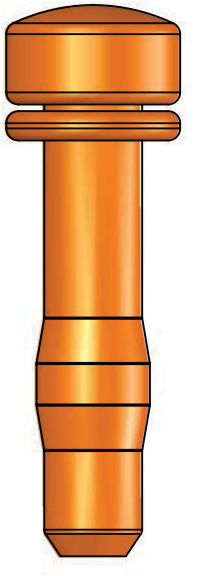
F6000411 - POLY
For some dewatering applications. Poly half-pin; regular shaft.



F6000413 - RUBBER
Oversized shaft for rubber media.

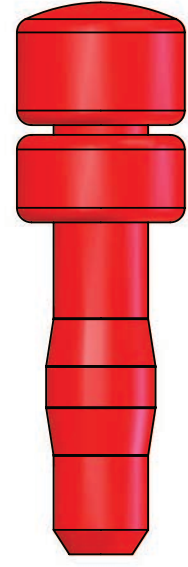


F6000415 - POLY
Extended shaft (10mm) for angle stringer w/o angle protector.

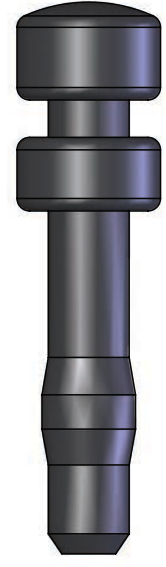


F6000587 - POLY
Extended shaft (15mm) for angle stringer w/ angle protector.

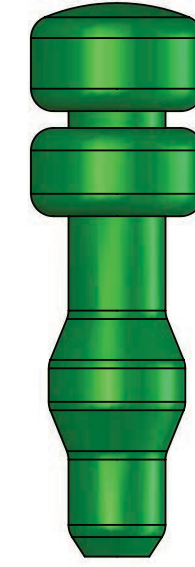
40MM PANELS



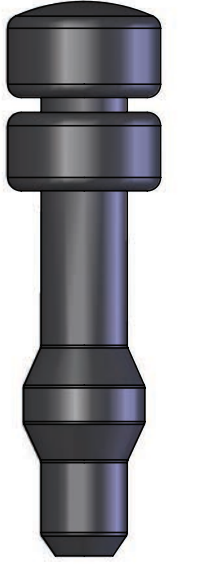
F6000418 - POLY
Regular shaft.



F6000431 - POLY
Extended shaft (15mm) for angle stringer w/ angle protector.

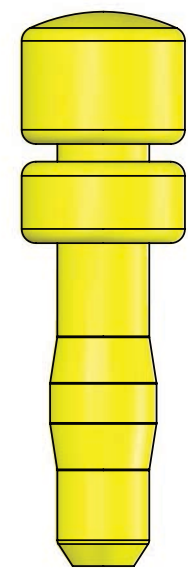


F6000424 - RUBBER
Oversized shaft for rubber media.

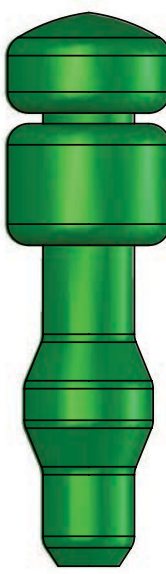


F6000563 - RUBBER
Extended shaft (15mm) for angle stringer w/ angle protector.

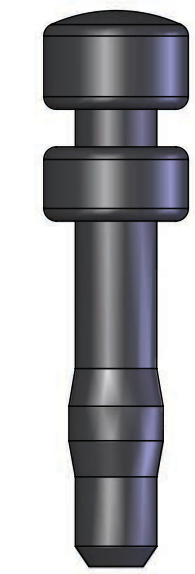
45MM PANELS



F6000426 - POLY
Regular shaft.

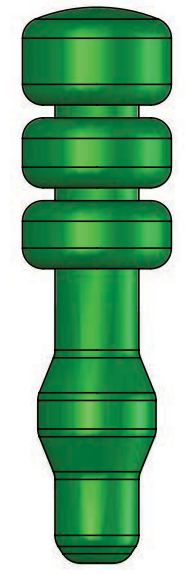


F6000429 - RUBBER
Oversized shaft for rubber media

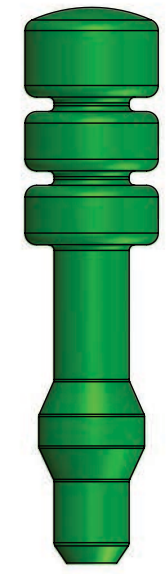


F6000431 - POLY
Extended shaft (15mm) for angle stringer w/ angle protector.

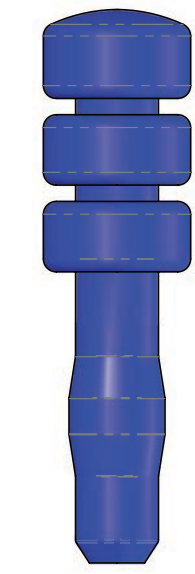
50MM PANELS



F6000435 - RUBBER
Oversized shaft for rubber media.

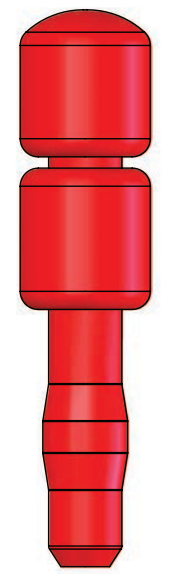


F6000432 - RUBBER
Extended shaft (15mm) for angle stringer w/ angle protector.

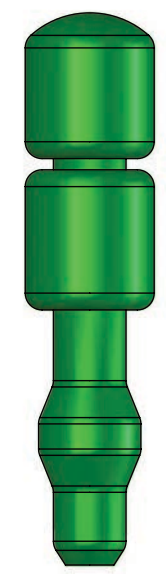


F6000433 - POLY
Standard shaft (50mm)

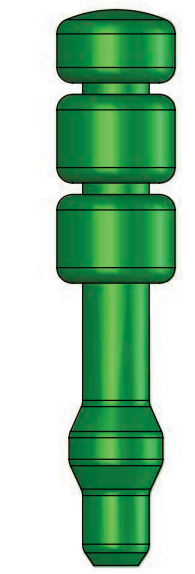
55, 60, 65MM PANELS



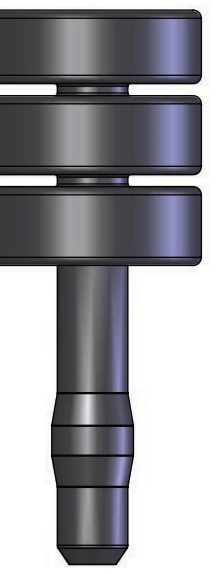
F6000443 - POLY
Regular shaft.



F6000445 - RUBBER
Oversized shaft for rubber media.

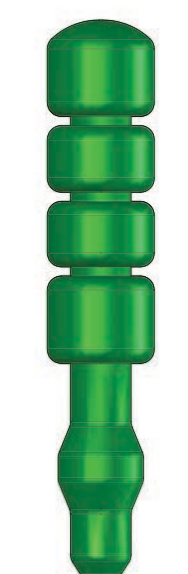


F6000561 - RUBBER
Extended shaft (15mm) for angle stringer w/ angle protector.

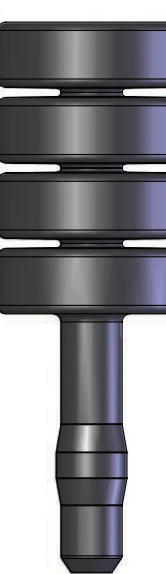


F6000533 - POLY
Pin & sleeve. 65mm poly pin.

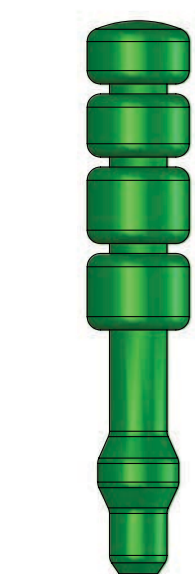
80MM PANELS



F6000454 - RUBBER
Oversized shaft for rubber only.

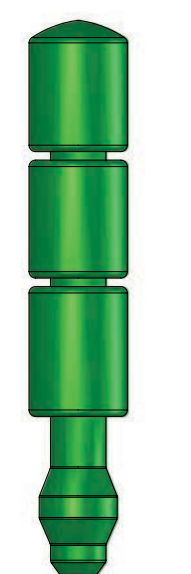


F6000538 - POLY
Pin & sleeve. 80mm poly pin.



F6000586 - RUBBER
Extended shaft (15mm) for angle stringer w/ angle protector.

100MM PANELS



F6000408 - RUBBER
Oversized shaft for rubber media